



INDUSTRIAL CCTV SYSTEMS

CATALOG SEPTEMBER 2016 REV.00

HIGH TEMPERATURE CAMERA SYSTEMS - FURNACE CAMERAS - WATER & AIR COOLED CAMERA HOUSING





INDUSTRIAL CCTV SYSTEMS

▶ **HIGH TEMPERATURE CAMERA SYSTEMS UP TO 90°C**

Page 1 - Air cooled pressurized camera housing - AIRTEC

▶ **HIGH TEMPERATURE CAMERA SYSTEMS UP TO 400°C**

Page 3 - Air & water cooled pressurized camera housing - ACQUATEC

▶ **HIGH TEMPERATURE CAMERA SYSTEMS UP TO 2200°C**

Page 7 - Cameras for high temperature video systems - CAMTEC

Page 13 - High temperature vision systems - SONDATEC

Page 18 - Protection devices - OUTEC & INTEC

Page 21 - Control cabinet - CABTEC

▶ **ACCESSORIES**

Page 29 - Connection kit - KITEC



HIGH TEMPERATURE CAMERA SYSTEMS UP TO 90°C

▶ HIGH TEMPERATURE CAMERA SYSTEMS UP TO 90°C

Product code configuration table

airtec

0	8	X	A	B	C
			Length	Power Supply	Window
			3 = 300 mm	0 = 230Vac	0 = Flat Glass
			5 = 350 mm	2 = 12Vdc / 24Vac	1 = Convex Glass
				3 = PoE	3 = Germanium (30Ø usable)
				9 = Ø	5 = Germanium (55Ø usable)
					9 = without window

0 8 X A B C

AIR COOLED PRESSURIZED CAMERA HOUSING



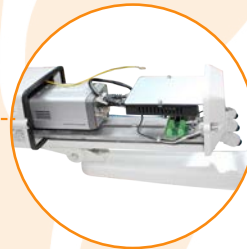
AIRTEC with special Germanium window



AIR08X391



AIR08Xxxx



AIRTEC with POE Injector



- Air cooled pressurized housing
- Useful for Analogue, IP or Infrared camera
- Up to 90°C

HIGH TEMPERATURE CAMERA SYSTEMS UP TO 90°C

AIR08X007



Complete industrial camera system with varifocal lens DC Auto Iris 3-10.5 mm F1.4 IR. 1.3 Mega Pixel sensor, high resolution >800 lines, Ultra Wide Dynamic Range specially designed for applications with high contrast level, and in presence of infrared irradiation. Configuration of parameters is done through use of UTC keyboard (optional). Standard PAL-NTSC (can be chosen). The camera is supplied inside AIRTEC housing with pressurized air circuit, which is designed for operation up in temperature up to 90°C, with compressed air cooling circuit, the air characteristic is as following: Tin<35°C @1Bar - 3Nm³/h. The housing is equipped with air barrier function which keeps the lens clean. Material: die-cast Aluminum. The connection for air circuit is: 1x1/4"M-BSPP countersunk 60° in nickel-plated brass. The quality of air requested should be instrumental air, which can be used through using of air filter group model GFATEC. The housing is supplied complete with wall mounting bracket with swivel ball joint and junction box with 230Vac-12Vdc. Supplied with terminal strip (detachable) for power inlet, "ELPRO" terminal for inlet/outlet of video, local BNC socket for video signal in service. Switching power supply 96-230Vac 50-60Hz-12Vcc 15W. Supplied with short circuit protection. The housing is IP66 and the kit of interconnection from camera to junction box is consisted of power supply cable, coaxial cable for video signal, protected inside steel sheath, covered by braided steel. Length of the cable: 1.5 m.

AIR08X008

Complete industrial camera system with varifocal lens DC Auto Iris 5-60 mm F1.6 IR. Other features as AIR08X007.

AIR08X300



Pressurized camera housing for temperature up to 90°C. Internal available dimensions: 105x86x300 mm. Flat glass window: 80x70 mm. Power supply 230Vac for heater and thermostat. Compressed air cooling circuit: interconnection 1x1/4"M-BSPP. Temp. IN <35°C, pressure IN from 0.5bar to 1bar max. Requires the use of air quality instrumentation, available through GFATEC filter assembly series. Designed to operate in dusty environments. Cable glands 3 M16x1.5. Die-cast and extruded aluminum body. Opening slide and hang system. Color white RAL9002. IP66. Supplied with air barrier and wall mounting brackets.

AIR08X320

Pressurized camera housing for temperature up to 90°C. Internal available dimensions: 105x86x300 mm. Flat glass window: 80x70 mm. Power supply 12Vdc/24Vac for heater and thermostat. Other features as AIR08X300.

AIR08X329

Pressurized camera housing for temperature up to 90°C. Internal available dimensions: 105x86x300 mm. Supplied without window. Power supply 12Vdc/24Vac for heater and thermostat. Other features as AIR08X300.

AIR08X391

Pressurized camera housing for temperature up to 90°C. Internal available dimensions: 105x86x300 mm. Convex glass window: 80x70 mm. Other features as AIR08X300.

AIR08X500



Pressurized camera housing for temperature up to 90°C. Internal available dimensions: 105x86x350 mm. Flat glass window: 80x70 mm. Power supply 230Vac for heater and thermostat. Other features as AIR08X300.

AIR08X520

Pressurized camera housing for temperature up to 90°C. Internal available dimensions: 105x86x350 mm. Flat glass window: 80x70 mm. Power supply 12Vdc/24Vac for heater and thermostat. Other features as AIR08X300.

AIR08X529

Pressurized camera housing for temperature up to 90°C. Internal available dimensions: 105x86x350 mm. Supplied without window. Power supply 12Vdc/24Vac for heater and thermostat. Other features as AIR08X300.

AIR08X530



Pressurized camera housing with PoE+ splitter for temperature up to 90°C. Internal available dimensions: 105x86x350 mm. Flat glass window: 80x70 mm. Power supply PoE+: 30W (IEEE 802.3at) input: 36-57Vdc - output: 12Vdc for camera, heater and thermostat. Other features as AIR08X300.



HIGH TEMPERATURE CAMERA SYSTEMS UP TO 400°C

► HIGH TEMPERATURE CAMERA SYSTEMS UP TO 400°C

Product code configuration table

acqua^{tec}

0	7	X	A	B	C
			Front glass / Size	Cooling	Versions
			1: Movable Glass (IP43)	0: H2O + AIR	PROGRESSIVE VERSION: Is identified with progressive numbering 1, 2, 3, 4, 5.. for changes to the original project classified with 0
			2: Fixed Glass (IP66)	1: ONLY AIR	
			3: Fixed Glass / Large version	2: ONLY H2O	
				3: NO COOLING	

0 8 X A B C

AIR & WATER COOLED PRESSURIZED CAMERA HOUSING

Pressurized cooling system



Small window ideal for less internal overheating due to irradiation

- Air or Air&Water cooled pressurized housing
- Useful for Analogue, IP or Infrared camera and various instrumentation
- Up to 400°C

HIGH TEMPERATURE CAMERA SYSTEMS UP TO 400°C

ACQ07X003



Complete industrial High Definition IP camera system with varifocal lens 3-10,5 mm 1/2,7" CMOS sensor 1280x720 pixel. Color mode for high light level image or monochrome for low light furnace with minimum illumination 0,05Lux (on sensor). WDR 76 dB. Multiple streaming up to 1280*720@25ips H.264 and M-JPEG. Special functions as: AES, Fix Shutter, Preset Shutter, Image mirror, flip. Camera and lens are protected inside a Stainless Steel AISI304 ACQUATEC housing with water and pressurized air cooling circuit (Instrument type Tin<35°C @1Bar - 3Nm³/h), designed for continuous operations with high temperature up to 400°C and equipped with special anti-dust frontal glass. Full assembly complex with power unit switching type 96-230Vac 50-60Hz-12Vcc 15W with industrial terminal block, short circuit protection, "ELPRO" terminal for coaxial cable inlet/outlet, local BNC socket for local service. All protected inside a IP66 aluminum JBX. Interconnection cable from camera to JBX protected inside steel sheath, covered by braided steel 1.5m length. Water connection 2x1/2" M-BSPP, air connection 1x1/4" M-BSPP. Electrical signal entry way 1x1/2"F. Air filtration unit series GFATEC is requested. Supplied with wall mounting bracket with swivel ball joint.

ACQ07X004

Complete industrial High Definition IP camera system with varifocal lens 5-60 mm F1.6 IR. Other characteristics as ACQ07X003.

ACQ07X005



Complete industrial camera system with varifocal lens DC Auto Iris 3-10,5 mm F1.4 IR. 1.3 Mega Pixel sensor, high resolution >800 lines, Ultra Wide Dynamic Range specially designed for application with high contrast level and in presence of infrared irradiation. Configuration of parameters is done through use of UTC keyboard (optional) Standard PAL-NTSC (can be chosen). The camera is supplied inside ACQUATEC housing with pressurized air circuit, which is designed for continuous operations with high temperature up to 400°C, with compressed water and air cooling circuit (Tin<35°C @1Bar - 3Nm³/h). The housing is equipped with a special air barrier which keeps the lens clean. Made in Stainless Steel INOX AISI304. The connection for air circuit is: 1x1/4"M-BSPP countersunk 60° in nickel-plated brass. The quality of air requested should be instrumental air, which can be used through using of air filter group model GFATEC. The housing is supplied complete with wall mounting bracket with swivel ball joint and junction box with 230Vac-12Vdc. Supplied with terminal strip (detachable) for power inlet, "ELPRO" terminal for inlet/outlet of video, local BNC socket for video signal in service. Switching power supply 96-230Vac 50-60Hz-12Vcc 15W. Supplied with short circuit protection. The housing is IP66 and the kit of interconnection between camera and junction box is consisted of power supply cable, coaxial cable for video signal, protected inside steel sheath, covered by braided steel. Length of the cable: 1.5 m.

ACQ07X006

Complete industrial camera system with varifocal lens DC Auto Iris 5-60 mm F1.6 IR. Other characteristics as ACQ07X005.

ACQ07X007



Complete industrial camera system with varifocal lens DC Auto Iris 3-10,5 mm F1.4 IR. 1.3 Mega Pixel sensor, high resolution >800 lines, Ultra Wide Dynamic Range specially designed for applications with high contrast level, and in presence of infrared irradiation. Configuration of parameters is done through use of UTC keyboard (optional). Standard PAL-NTSC (can be chosen). The camera is supplied inside ACQUATEC housing with pressurized air circuit, which is designed for operation up in temperature up to 90°C, with compressed air cooling circuit, the air characteristic is as following: Tin<35°C @1Bar - 3Nm³/h. The housing is equipped with air barrier function which keeps the lens clean. Material: Stainless Steel INOX AISI304. The connection for air circuit is: 1x1/4"M-BSPP countersunk 60° in nickel-plated brass. The quality of air requested should be instrumental air, which can be used through using of air filter group model GFATEC. The housing is supplied complete with wall mounting bracket with swivel ball joint and junction box with 230Vac-12Vdc. Supplied with terminal strip (detachable) for power inlet, "ELPRO" terminal for inlet/outlet of video, local BNC socket for video signal in service. Switching power supply 96-230Vac 50-60Hz-12Vcc 15W. Supplied with short circuit protection. The housing is IP66 and the kit of interconnection between camera and junction box is consisted of power supply cable, coaxial cable for video signal, protected inside steel sheath, covered by braided steel. Length of the cable: 1.5 m.

ACQ07X008

Complete industrial camera system with varifocal lens DC Auto Iris 5-60 mm F1.6 IR. Other characteristics as ACQ07X007.

ACQ07X100



Pressurized camera housing ACQUATEC series IP66 with power supply max 24Vac, designed for continuous operation with high temperatures up to 400°C, water and air compressed cooled (Tin<35°C @1Bar - 3Nm³/h). Max camera's dimensions: Ø90 mm x 320 mm. Minimum optical focal to be used without interception: 3,5 mm (1/3"). Realized in Stainless Steel AISI304.

Interconnection with air circuit 1x1/4" M-BSPP flared 60°, in nickel-plated brass. The device requires the use of compressed air, through the filtering group GFATEC. Completed with anti-condensation resistance and 24Vac heating.

ACQ07X110



Pressurized camera housing ACQUATEC designed for continuous operation with high temperatures up to 90°C, with compressed air cooled circuit (Tin<35°C). Further characteristics as ACQ07X100.

ACQ07X200



Pressurized camera housing ACQUATEC series IP66, with special dust and infrared protection glass. Other characteristics as ACQ07X100.

ACQ07X210



Pressurized camera housing ACQUATEC IP66, designed for continuous operation with high temperatures up to 90°C, with compressed air cooled circuit (Tin<35°C @1Bar - 3Nm³/h) and special barrier of air blade for crystal's protection. Further characteristics as ACQ07X100.

ACQ07X300



Pressurized camera housing ACQUATEC IP67, large version, designed for continuous operations up to 400°C. Water and compressed air cooled. Usable front window: Ø110mm, thickness: 5mm. Internal available dimensions: 116x116x485 mm. Realized in electro-polished Stainless Steel AISI316L. Weight: 18Kg. Water fitting 2x1/2" F-BSPP, air 1/4" F-BSPP. Cables entry: 2 M20x1,5. Air filtration unit series GFATEC is requested.

ACQ07X900



Pressurized camera housing made of Stainless Steel AISI304 for industrial use. External diameter max 129 mm, length 250 mm. Cable inlet 1x1/2" F-BSPP.

ACQ07X901



Pressurized camera housing with compressed air and water circuit (Tin<35°C @1Bar - 3Nm³/h). Dimensions: internal Ø90x220 mm, external Ø150x250 mm. Minimum optical focal to be used without interception: 3,5 mm (1/3"). Realized in Stainless Steel AISI304. Interconnection with air circuit 1x1/4" M-BSPP flared 60°, water 2x1/2" M-BSPP flared 60° in nickel-plated brass. The device requires the use of compressed air, through the filtering group GFATEC. Cables entrance 2x1/2" F-BSPP. Cable glands excluded.

ACQ07G004



Wall mounting bracket for ACQUATEC and SONDATEC housing, realized in Stainless Steel AISI304.

ACQ07G100



Joint bracket for ACQUATEC and SONDATEC housing, realized in Stainless Steel AISI304. Allows a wide range of vertical and horizontal position.

07H001



Transparent glass window, diameter 65 mm, thickness 3 mm.

07H002



Metallic glass window, diameter 65 mm, thickness 3 mm.

07H003



Transparent level glass, diameter 74 mm, thickness 3 mm.

07H005



Quartz protection glass, high temperature resistant, diameter 65 mm, thickness 1 mm.

07H007



Protection filter, FHBG radiation, high temperature resistant, diameter 65 mm, thickness 1 mm.

HIGH TEMPERATURE CAMERA SYSTEMS UP TO 2200°C

► HIGH TEMPERATURE CAMERA SYSTEMS UP TO 2200°C

PROTECTION DEVICES*

cam^{tec}

sonda^{tec}

ou^{tec}

in^{tec}

cab^{tec}*



+



+



or



+



*Depending of the application may be not required.

HIGH TEMPERATURE CAMERA SYSTEMS UP TO 2200°C

HIGH TEMPERATURE CAMERA SYSTEMS UP TO 2200°C

► HIGH TEMPERATURE CAMERA SYSTEMS UP TO 2200°C

Product code configuration table

camtec

1 2 X

1 2 X A B C D

A	B	C	D
Length [mm]	Type of sleeve	Lens (Diagonal angle / focal / mm / inclination)	Option
1 = 1200	4 = HD SDI type for Sondatec 2.0	0 = 78° - 18° / 3,6 - 18	T = Temp. Sensor (PT100)
2 = 3000	5 = HD SDI type for Sondatec 1.0	1 = 53° / 6	S = Temp. Sensor (4-20 mA)**
3 = 300	6 = for Sondatec 1.0	2 = 74° / 4	E = Special version for EAF applications
5 = 1000	7 = for Sondatec 2.0	3 = 96° / 2,8	F = as model "E" + Temp. Sensor (PT100)
7 = 700	A = IP Sondatec 1.0	4 = 22° / 25	G = as model "E" + Temp. Sensor (4-20 mA)
9 = 900	B = low lux 2.0	5 = 33° / 10	
	C = low lux 1.0	6 = 33° - 6° / 10 - 50	
	D = IP Sondatec 2.0	9 = 40° / 8 / 90°	
	E = low lux 1.0 NTSC	A = 85° / 3,3	
		B = 85° / 3,3 / 45°	
		C = 85° / 3,3 / 60°; field of vision: up/bottom	
		D = 85° / 3,3 / 60°; field of vision: left/right	
		E = 78° - 18° / 3,6 - 18 for AIR cooled type	

** "S" option is not available with version L = 300 mm.

Camera sensor with special feature for high contrasts and strong radiation

MIL Std. multipolar connector



Easy fit all in one device

Optical lens with aperture <3 mm diameter

CAMERAS FOR HIGH TEMPERATURE VIDEO SYSTEMS

CAM12X360



Industrial camera with ADJUSTABLE high temperature lens from 78° to 18° (diagonal angle) with a frontal lens resistant up to T=1000°Cx10 min in the absence of cooling system, used with SONDATEC 1.0. L=300 mm. 1.3 MP sensor, high resolution >800 lines, Ultra WDRange specified for applications with high contrast and in presence of IR wavelengths. Configuration of parameters through UTC keyboard (optional). Standard PAL-NTSC selectable. Power supply: 12Vdc/24Vac (50-60Hz). Over-temp. alarm switch and temp. sensor included. **THE PRICE INCLUDES ASSEMBLING, SETTING AND SPECIAL CAMERA PROGRAMMING.**

CAM12X360T

Industrial camera as CAM12X360, complete with temperature sensor (Pt100).

CAM12X360E

Industrial camera "E" series for EAF applications with ADJUSTABLE high temperature lens from 78° to 18° (diagonal angle). L=300 mm. Power supply: 12Vdc / 24Vdc, <3W. Other specification as CAM12X360.



CAM12X361

Industrial camera with high temperature lens straight vision diagonal angle of view 53°. Other specification as for CAM12X360.

CAM12X361T

Industrial camera as CAM12X361, complete with temperature sensor (Pt100).

CAM12X361E

Industrial camera "E" series for EAF applications with high temperature lens straight vision diagonal angle of view 53°. L=300 mm. Power supply: 12Vdc / 24Vdc, <3W. Other specifications as CAM12X361.

CAM12X362

Industrial camera with high temperature lens straight vision diagonal angle of view 74°. Other specification as for CAM12X360.

CAM12X362T

Industrial camera as CAM12X362, complete with temperature sensor (Pt100).

CAM12X362E

Industrial camera "E" series for EAF applications with high temperature lens straight vision diagonal angle of view 74°. L=300 mm. Power supply: 12Vdc / 24Vdc, <3W. Other specification as CAM12X362.

CAM12X365

Industrial camera with high temperature lens straight vision diagonal angle of view 33°. Other specification as for CAM12X360.

CAM12C365T

Industrial camera as CAM12X365, complete with temperature sensor (Pt100).

CAM12X366

Industrial camera with ADJUSTABLE high temperature lens from 33° to 6° (diagonal angle). Other specification as for CAM12X360.

CAM12X366T

Industrial camera as CAM12X366, complete with temperature sensor (Pt100).

CAM12X366E

Industrial camera "E" series for EAF applications with ADJUSTABLE high temperature lens from 33° to 6° (diagonal angle). L=300 mm. Power supply: 12Vdc / 24Vdc, <3W. Other specification as CAM12X360.

CAM12X366F

Industrial camera as CAM12X366E, complete with temperature sensor (Pt100).

CAM12X370



Industrial camera with ADJUSTABLE high temperature lens from 18° to 78° (diagonal angle) with a frontal lens resistant up to T=1000°C x 10 minutes in the absence of cooling system, used with SONDATEC 2.0, Length = 300 mm. 1.3 Mega pixel sensor, high resolution >800 lines, Ultra Wide Dynamic Range specified for applications with high contrast and in presence of infrared wavelengths. Configuration of parameters through UTC keyboard (optional). Standard PAL-NTSC selectable. Power supply: 12 Vdc or 24 Vdc (50-60Hz). Complete with alarm thermostat for overheating and temperature sensor.

THE PRICE INCLUDES ASSEMBLING, SETTING AND SPECIAL PROGRAMMING OF THE CAMERA.

CAM12X370T

Industrial camera as CAM12X370, complete with temperature sensor (Pt100).

CAM12X370S

Industrial camera as CAM12X370, complete with temperature sensor (Pt100: 4-20mA).

CAM12X371

Industrial camera with high temperature lens straight vision diagonal angle of view 53°. Other specification as for CAM12X370.

CAM12X371T

Industrial camera as CAM12X371, complete with temperature sensor (Pt100).

CAM12X371S

Industrial camera as CAM12X371, complete with temperature sensor (Pt100: 4-20mA).

CAM12X371E

Industrial camera "E" series for EAF applications with high temperature lens straight vision diagonal angle of view 53°. L=300 mm. Power supply: 12Vdc / 24Vdc, <3W. Other specification as CAM12X371.

- CAM12X372**
- CAM12X372T**
- CAM12X372S**
- CAM12X3A2T**



- CAM12X3B2T**

Industrial camera with high temperature lens straight vision diagonal angle of view 74°. Other specifications as for CAM12X370.

Industrial camera as CAM12X372, complete with temperature sensor (Pt100).

Industrial camera as CAM12X371, complete with temperature sensor (Pt100: 4-20mA).

IP industrial camera supplied with assembled high temperature lens of 74° (diagonal angle), to be used with SONDATEC 1.0 series. With "Progressive Scan Color CCD 1/3" sensor. 1280x960 pixels. Frame rate up to 30 fps @ max resolution. Adjustment of image (for applications with high contrast and in presence of infrared wavelengths) can be done through web browser and PC (not included). Suitable also for applications in low level of luminosity thanks to its removable IR filter. Triple coding images with MJPEG, MPEG-4, H.264 compression algorithm. Power supply: 12 Vdc or PoE (Power over Ethernet IEEE 802.3af 2nd class). Complete with temperature sensor. THE PRICE INCLUDES ASSEMBLING, SETTING AND SPECIAL CAMERA PROGRAMMING.

Industrial camera special also for low luminosity applications, with high temperature lens of 74° (diagonal angle) suitable for SONDATEC 2.0. 1/3" High Sensitivity 960H CCD sensor, supports 650TVL. Min. Illumination: Color: 0.01Lux F1.2 ~ 0.0006Lux F1.2 (shutter: x16); B/W: 0.005Lux F1.2 ~ 0.00003Lux F1.2 (shutter: x16). With automatic device for infrared filter displacement. Functions (D-WDR, BLC, HLC, WB, 3DNR, Defog). Configuration of parameters to be done through remote keyboard. Power supply: 12-24Vdc, <3W. Complete with rear cover with multi-polar connector MIL std and temperature sensor (Pt100). Operating temperature: -10°C/+55°C. THE PRICE INCLUDES ASSEMBLING, SETTING AND SPECIAL CAMERA PROGRAMMING.

Industrial camera special also for low luminosity applications, with high temperature lens ADJUSTABLE from 78° to 18° (diagonal angle) suitable for SONDATEC 1.0. Other specification as CAM12X3B2T.

Industrial camera special also for low luminosity applications, with high temperature lens of 53° (diagonal angle) suitable for SONDATEC 1.0. Other specification as CAM12X3B2T.

Industrial camera special also for low luminosity applications, with high temperature lens of 74° (diagonal angle) suitable for SONDATEC 1.0. Other specification as CAM12X3B2T.

Industrial camera special also for low luminosity applications, with high temperature lens of 33° (diagonal angle) suitable for SONDATEC 1.0. Other specification as CAM12X3B2T.

Industrial camera special also for low luminosity applications, with high temperature lens ADJUSTABLE from 33° to 6° (diagonal angle) suitable for SONDATEC 1.0. Other specification as CAM12X3B2T.

Industrial camera standard NTSC special also for low luminosity applications, with high temperature lens ADJUSTABLE from 78° to 18° (diagonal angle) suitable for SONDATEC 1.0. Other specification as CAM12X3B2T.

Industrial camera standard NTSC special also for low luminosity applications, with high temperature lens of 53° (diagonal angle) suitable for SONDATEC 1.0. Other specification as CAM12X3B2T.

Industrial camera standard NTSC special also for low luminosity applications, with high temperature lens of 74° (diagonal angle) suitable for SONDATEC 1.0. Other specification as CAM12X3B2T.

Industrial camera standard NTSC special also for low luminosity applications, with high temperature lens of 33° (diagonal angle) suitable for SONDATEC 1.0. Other specification as CAM12X3B2T.

Industrial camera standard NTSC special also for low luminosity applications, with high temperature lens ADJUSTABLE from 78° to 18° (diagonal angle) suitable for SONDATEC 1.0. Other specification as CAM12X3B2T.

Industrial camera with ADJUSTABLE high temperature lens from 78° to 18° (diagonal angle) with a frontal lens resistant up to T=1000°C x 10 min in the absence of cooling system, used with SONDATEC 1.0. L=700 mm. 1.3 Mega pixel sensor, high resolution >800 lines, U-WDR specified for applications with high contrast and in presence of IR wavelengths. Configuration of parameters through UTC keyboard (optional). Standard PAL-NTSC selectable. Power supply: 12 Vdc or 24 Vac (50-60Hz). Over-temperature alarm switch included. THE PRICE INCLUDES ASSEMBLING, SETTING AND SPECIAL CAMERA PROGRAMMING.

- CAM12X760**



CAM12X760T

Industrial camera as CAM12X760, complete with temperature sensor (Pt100).

CAM12X760S

Industrial camera as CAM12X760, complete with temperature sensor (Pt100: 4-20mA).

CAM12X761

Industrial camera with high temperature lens straight vision diagonal angle of view 53°. Other specification as for CAM12X760.

CAM12X761T

Industrial camera with high temperature lens 53° (diagonal angle) used with SONDATEC 1.0. Length=700. 1.3 Mega pixel sensor, high resolution >800 lines, Ultra Wide Dynamic Range specified for applications with high contrast, and in presence of infrared wavelengths. Configuration of parameters through UTC (optional). Std PAL-NTSC selectable. Power supply: 12Vdc or 24 Vac (50-60Hz). Temperature sensor (Pt100). **THE PRICE INCLUDES ASSEMBLING, SETTING AND PROGRAMMING OF THE CAMERA.**

CAM12X762

Industrial camera with high temperature lens straight vision diagonal angle of view 74°. Other specification as for CAM12X760.

CAM12X762T

Industrial camera as CAM12X762, complete with temperature sensor (Pt100).

CAM12X762S

Industrial camera as CAM12X762, complete with temperature sensor (Pt100: 4-20mA).

CAM12X766

Industrial camera with high temperature lens ADJUSTABLE from 33° to 6° (diagonal angle). Other specification as for CAM12X760.

CAM12X766T

Industrial camera as CAM12X766, complete with temperature sensor (Pt100).

CAM12X766S

Industrial camera as CAM12X766T, complete with temperature sensor (Pt100: 4-20mA).

CAM12X770

Industrial camera with high temperature zoom lens straight vision diagonal angle of view from 78° to 18° to be used inside SONDATEC 2.0. 1/3" CMOS sensor with "Digital Pixel System®" chipset-17-bit Signal Processing-High sensitivity at F0.95, 50IRE: 0.5 lux. Progressive Scan image capture with (PsF) image data transmission. Electronic Day/Night switching. Digital zoom 4x. 4 preset. (AWB, AGC, BLC and extended slow shutter) DC auto iris. Configuration via UTC. Std PAL-NTSC selectable. Power: 12Vdc or 24Vac. Over-temp. alarm switch included. **THE PRICE INCLUDES ASSEMBLING, SETTING AND CUSTOM CONFIGURATION.**



CAM12X770T

Industrial camera as CAM12X770, complete with temperature sensor (Pt100).

CAM12X770S

Industrial camera as CAM12X770, complete with temperature sensor (Pt100: 4-20mA).

CAM12X771

Industrial camera with high temperature lens straight vision diagonal angle of view 53°. Other specification as for CAM12X770.

CAM12X771T

Industrial camera as CAM12X771, complete with temperature sensor (Pt100).

CAM12X772

Industrial camera with high temperature lens straight vision diagonal angle of view 74°. Other specification as for CAM12X770.

CAM12X773

Industrial camera with high temperature lens straight vision diagonal angle of view 96°. Other specification as for CAM12X770.

CAM12X776

Industrial camera with high temperature lens ADJUSTABLE from 33° to 6° (diagonal angle). Other specification as for CAM12X770.

CAM12X170

Industrial camera with ADJUSTABLE high temperature lens from 18° to 78° (diagonal angle) with a frontal lens resistant up to T=1000°Cx10 min in absence of cooling system, for SONDATEC 2.0, L=1200 mm. 1.3 MP sensor, high resolution >800 lines, Ultra Wide Dynamic Range specified for applications with high contrast and in presence of IR wavelengths. Configuration of parameters through UTC (optional). Std PAL-NTSC selectable. Power supply: 12 Vdc or 24 Vdc (50-60Hz). Over-temp. alarm switch included. **THE PRICE INCLUDES ASSEMBLING, SETTING AND SPECIAL PROGRAMMING OF THE CAMERA.**

CAM12X170T

Industrial camera as CAM12X170, complete with temperature sensor (Pt100).

CAM12X170S

Industrial camera as CAM12X770, complete with temperature sensor (Pt100: 4-20mA).



CAM12X171

Industrial camera with high temperature lens straight vision diagonal angle of view 53°. Other specification as for CAM12X170.

CAM12X171T

Industrial camera as CAM12X171, complete with temperature sensor (Pt100).

CAM12X171S

Industrial camera as CAM12X771, complete with temperature sensor (Pt100: 4-20mA).

CAM12X172

Industrial camera with high temperature lens straight vision diagonal angle of view 74°. Other specification as for CAM12X170.

CAM12X172T

Industrial camera as CAM12X172, complete with temperature sensor (Pt100).

CAM12X172S

Industrial camera as CAM12X172, complete with temperature sensor (Pt100: 4-20mA).

CAM12X173

Industrial camera with high temperature lens straight vision diagonal angle of view 96°. Other specification as for CAM12X170.

CAM12X173T

Industrial camera as CAM12X173, complete with temperature sensor (Pt100).

CAM12X173S

Industrial camera as CAM12X173, complete with temperature sensor (Pt100: 4-20mA).

CAM12X17A



Industrial camera with innovative 1.3 Mega pixel sensor. High resolution >800 lines, Ultra Wide Dynamic Range, specific for scenes with high contrast and radiation for infrared. Parameters configuration on board and "On screen" menu or also "Up To Coaxial" through UTC keyboard. Standard selectable PAL-NTSC. Power supply 12Vdc or 24Vac (50-60Hz). Furnished assembled with optical periscope 05X083 with angle of view 85°. Completed with mechanical parts for coupling with housing SONDATEC 2.0.

CAM12X17B

Industrial camera with diagonal vision 45° and diagonal angle of view 85°. Other specification as for CAM12X17A.

CAM12X17C

Industrial camera with diagonal vision 60° and diagonal angle of view 85° (H68°-V51°). Field of vision: up/bottom. Other specification as for CAM12X17A.

CAM12X17CT



Industrial camera as CAM12X17C, complete with temperature sensor (Pt100).

CAM1X17CS

Industrial camera as CAM12X17C, complete with temperature sensor (Pt100: 4-20mA).



CAM12X5D1T



IP industrial camera with high temperature lens straight vision diagonal angle of view 53° to be used inside SONDATEC 2.0. Length=1000 mm. 1/3" progressive scan color CCD sensor, with 1280x960 pixel. Frame rate up to 30fps @ max resolution. Image settings available right for high contrast and brightness background as furnace, boiler, high temperature process. Removable IR cut filter for low light application also. Configuration through web browser and PC (not included). Power 12Vdc or PoE (IEEE 802.3af Class2). Temperature sensor (Pt100). PRICE INCLUDE ASSEMBLING; SETTING AND CUSTOM CONFIGURATION.

CAM12X5D2

IP industrial camera with high temperature lens straight vision diagonal angle of view 74° to be used inside SONDATEC 2.0. Length=1000mm. 1/3" progressive scan color CCD sensor, with 1280x960 pixel. Frame rate up to 30fps @ max resolution. Image settings available right for high contrast and brightness background as furnace, boiler, high temperature process. Removable IR cut filter for low light application also. Configuration through web browser and PC (not included). Power 12Vdc or PoE (Power Over Ethernet IEEE 802.3af Class2). PRICE INCLUDE ASSEMBLING; SETTING AND CUSTOM CONFIGURATION.



CAM12X5D2T

IP industrial camera as CAM12X5D2, complete with temperature sensor (Pt100).

CAM12X5D2S

IP industrial camera as CAM12X5D2, complete with temperature sensor (Pt100: 4-20mA).

CAM12XC96

Industrial camera CAMTEC90 series with diagonal lens 60° for SONDATEC 2.0 01X190. Sensor Pixim Seawolf digital Pixel Solution. High Resolution >690lines. Parameters configuration through UTC keyboard (not included). Power supply 12 Vdc. Completed with alarm thermostat for over-temperature. B/W versions available.

Tobx90°-6mm

Spare lens for CAM12X923 camera, with 60° diagonal angle of view.

TOBXP0286MK



High temperature lens Pin-hole type f=2,8 mm for 1/3" CCD cameras. Diagonal angle of view 96°.

TOBXP0420MK



High temperature lens Pin-hole type f=4 mm for 1/3" CCD cameras. Diagonal angle of view 74°.

TOBXP0620MK



High temperature lens Pin-hole type f=6 mm for 1/3" CCD cameras. Diagonal angle of view 53°.

TOBXP1028FK

High temperature lens Pin-hole type f=10 mm for 1/3" CCD cameras. Diagonal angle of view 33°.

TOBXP2562FK



High temperature lens Pin-hole type f=25 mm for 1/3" CCD cameras. Diagonal angle of view 22°.

TOBXP1050



High temperature lens Pin-hole type f=10-50 mm for 1/3" CCD cameras. CS mount.

TOBXP3618B



High temperature lens Pin-hole type f=3,6-18 mm for 1/3" CCD cameras. Diagonal angle from 78° to 18°. Manufactured in Stainless Steel with quartz lenses. CS mount.

CAM12F001

Optic filter BG18, thickness 1mm, for infrared rays lens 22° - 33° - 53° - 74°.

CAM12F002

Optic filter BG18, for infrared rays lens 96°.

CAM12F101



Optic filter NEUTRAL DENSITY NG9 for high brightness lens 22° - 33° - 53° - 74°.

CAM12F102

Optic filter NEUTRAL DENSITY NG9 for high brightness lens 96°.

CAM12F103

Optic filter NEUTRAL DENSITY NG9 for high brightness for VARIFOCAAL PIN-HOLE LENSES.

CAM12F104

Optic filter NEUTRAL DENSITY BG18 for high brightness for VARIFOCAAL PIN-HOLE LENSES. Diameter 16 mm, thickness 1 mm.

CAM12F100



High temperature frontal glass diameter 22 mm, to be used with CAMTEC series camera.

UTC

Portable camera control unit for easy on-screen set up and adjustment of default setting of Tecnovision CAM12X series. Complete with two patch coaxial BNC-BNC cord length 2 m.

HIGH TEMPERATURE CAMERA SYSTEMS UP TO 2200°C

► HIGH TEMPERATURE CAMERA SYSTEMS UP TO 2200°C

Product code configuration table

sonda^{tec}

0 1 X A Length [mm] B C

1 = 1000 / 1200

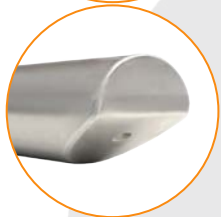
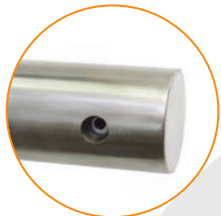
3 = 300

4 = 4000

7 = 700

Different versions depending on diagonal angle of view, material, air & water connections.

0 1 X A B C



Different angle of view available

Water cooling circuit made with three jackets

Air pressurized for protection and lens cleaning

Housings made with different types of Stainless Steel

- Water & Air cooled pressurized housings
- Employment of industrial parts
- Up to 2200°C

HIGH TEMPERATURE VISION SYSTEMS

SON01X301



Housing SONDATEC 1.0 for cameras CAMTEC series, designed for continuous operation with high temperatures up to 2200°C, water and air compressed cooled. Axial vision, for lens up to 105° diagonal angle of view. Made by Stainless Steel AISI316L, diameter 101,6 mm, length 350 mm.

SON01X302



Housing SONDATEC completed with flange for coupling to the VOD. Suitable for cameras CAMTEC series, designed for continuous operation with high temperatures up to 2200°C, water and air compressed cooled. Axial vision, it allows the application of lens with diagonal angles of view up to 105°. Made by Stainless Steel AISI316L, diameter 101,6 mm, length 350 mm. Completed with rear cover with multipolar connector MIL std. It includes internal wiring and bracket for camera.

SON01X310



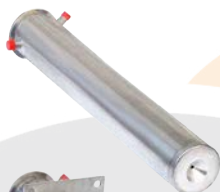
Housing SONDATECplus, designed for continuous operation with high temperatures up to 2200°C, water and air compressed cooled. Axial vision, for lens up to 32° diagonal angle of view. Made by Stainless Steel AISI316L, diameter 101,6 mm, length 300 mm. Complete with bottom cover for KITTEC series tube and multi-polar connector MIL std. Air and water fitting as 1/2" gas M-BSPP.

SON01X330



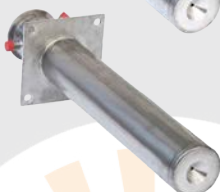
Housing 2.0 for cameras CAMTEC series designed for continuous operation with high temperatures up to 1500°C, water and air compressed cooled. Axial vision, for lens up to 105° diagonal angle of view. Made by Stainless Steel AISI316L, diameter 89 mm, length 350 mm. Water fitting as 1/2" M-BSPP, air 3/8" M-BSPP.

SON01X701



TV Camera housing SONDATEC 1.0 for cameras CAMTEC series, designed for continuous operation with high temperatures up to 2200°C, water and air cooled. Straight vision allows to use up to 105° diagonal angle of view lenses. Made by Stainless Steel AISI316L, diameter 101,6 mm, length 700 mm. Completed with back cover suitable for KITTEC connection series. Air inlet 1/4" M-BSPP, water inlet/outlet 1/2" M-BSPP.

SON01X702



TV Camera housing SONDATEC 1.0 VOD for cameras CAMTEC series, designed for continuous operation with high temperatures up to 2200°C, water and air cooled. Straight vision allows to use up to 105° diagonal angle of view lenses. Made by Stainless Steel AISI316L, diameter 101,6 mm, length 700 mm. Complete with back cover suitable for KITTEC connection series. Air inlet 1/4" M-BSPP, water inlet/outlet 1/2" M-BSPP.

SON01X703



SONDATEC 2.0 cooled housing for our high temperature camera series CAMTEC. Designed to work up to 2200 °C, cooling with water and compressed air. Axial vision. Suitable for lenses with diagonal angle of view up to 105°. Made in Stainless steel INOX AISI316L. Diameter: 89 mm, length: 700 mm.

SON01X711



TV Camera housing SONDATEC for cameras CAMTEC series, designed for continuous operation with high temperatures up to 2200°C, water and air cooled. Straight vision allows to use up to 105° diagonal angle of view lenses. Made by Stainless Steel HASTELLOY C276, diameter 101,6 mm, length 700 mm. With back cover completed with multi-polar connector MIL std. Air inlet 1/4" M-BSPP, water inlet/outlet 1/2" M-BSPP.

SON01X100



Housing SONDATEC 2.0 for cameras CAMTEC series, designed for continuous operation with high temperatures up to 2200°C, water and air cooled. Axial vision, it allows to use lens up to 105° diagonal angle of view. Made by Stainless Steel AISI310, diameter 89 mm, length 1000 mm. Water fitting as 1/2" M-BSPP, flaring 60°. Air 3/8" M-BSPP.

SON01X101



Housing SONDATEC 2.0 realized as SON01X100, but with connections for air and water placed on the left side (back view), suitable to be used with INTEC series.

SON01X102



Housing SONDATEC 2.0 realized as SON01X100, but with connections for air and water placed on the right side (back view), suitable to be used with INTEC series.

SON01X120



Housing SONDATEC 2.0 for camera CAMTEC for working up to 2200°C, water and air compressed cooled. Axial vision, for lens up to 105° diagonal angle of view. Made by Stainless Steel AISI310, diameter 89 mm, length 1200 mm. Water fitting as 1/2" M-BSPP, air 3/8" M-BSPP.

SON01X121



Housing SONDATEC 2.0 realized as SON01X120, but with connections for air and water placed on the left side (back view), suitable to be used with INTEC series.

SON01X122



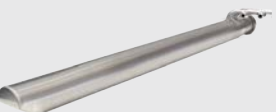
Housing SONDATEC 2.0 realized as SON01X120, but with connections for air and water placed on the right side (back view), suitable to be used with INTEC series.

SON01X125



Housing SONDATEC 2.0 for CAMTEC series camera. Able for working up to 1600°C, ONLY AIR COOLED using vortex tube technologies. Axial vision, for lens up to 105° diagonal angle of view. External tube made by Stainless Steel AISI310, diameter 89 mm, length 1200 mm. Air connection 2x1/2" M-BSPP, 1x3/8" M-BSPP.

SON01X145



Housing SONDATEC 2.0 for cameras CAM12X17B series, designed for continuous operation with high temperatures up to 2200°C, water and air cooled. Angle of view 45°, it allows to use lens up to 85° diagonal angle of view. Made by Stainless Steel AISI310, diameter 89 mm, length 1200 mm. Water fitting 1/2" M-BSPP, flared 60°. Air 3/8" M-BSPP.

SON01X160



Housing SONDATEC 2.0 for cameras CAM12X17C series for working up to 2200°C, water and air compressed cooled. Axial vision for lens 85° diagonal angle of view. Made by Stainless Steel AISI310, diameter 89 mm, length 1200 mm. Water fitting as 1/2" M-BSPP, air 3/8" M-BSPP.

SON01X161



Housing SONDATEC 2.0 for cameras CAM12X17C series, designed for continuous operation with high temperatures up to 2200°C, water and air cooled. Angle of Sonda inclination 120°, it allows to use lens up to 85° diagonal angle of view. Field of vision: BOTTOM. Made by Stainless Steel AISI310, diameter 89 mm, length 1200 mm. Connections for air and water placed on the LEFT (back view). Water fitting 1/2" M-BSPP, flared 60°. Air 3/8" M-BSPP.

SON01X162

Housing SONDATEC 2.0 for cameras CAM12X17C series. Field of vision: BOTTOM. Connections for air and water placed on the RIGHT side (back view). Other features as SON01X161.



SON01X163



Housing SONDATEC 2.0 for cameras CAM12X17C and CAM12X17CT, designed for continuous operation with high temperatures up to 2200°C, water and air cooled. Angle of Sonda inclination: 120°. Field of vision: LEFT. Made in Stainless Steel AISI310, diameter 89 mm, length 1200 mm (other on request). Connections for air and water placed on the LEFT side (back view). Water fitting 1/2" M-BSPP. Air 3/8" M-BSPP.

SON01X164

Housing SONDATEC 2.0 for cameras CAM12X17C and CAM12X17CT. Field of vision: LEFT. Connections for air and water placed on the RIGHT side (back view). Other features as SON01X164.

SON01X165



Housing SONDATEC 2.0 for cameras CAM12X17C and CAM12X17CT, designed for continuous operation with high temperatures up to 2200°C, water and air cooled. Angle of Sonda inclination: 120°. Field of vision: RIGHT. Made in Stainless Steel AISI310, diameter 89 mm, length 1200 mm (other on request). Connections for air and water placed on the LEFT side (back view). Water fitting 1/2" M-BSPP. Air 3/8" M-BSPP.

SON01X166

Housing SONDATEC 2.0 for cameras CAM12X17C and CAM12X17CT. Field of vision: RIGHT. Connections for air and water placed on the RIGHT side (back view). Other features as SON01X165.

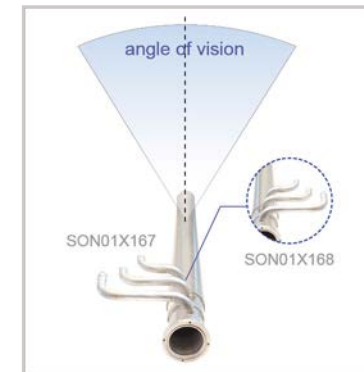
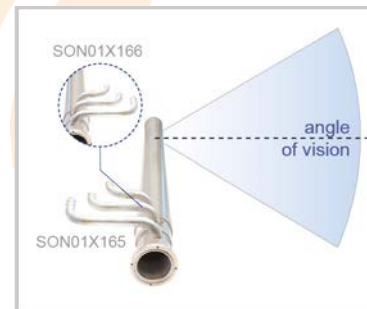
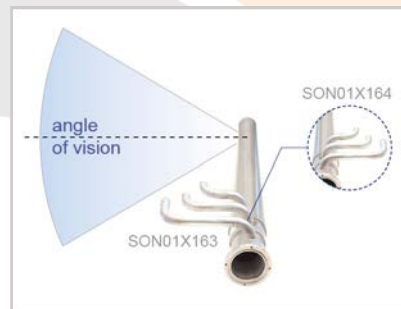
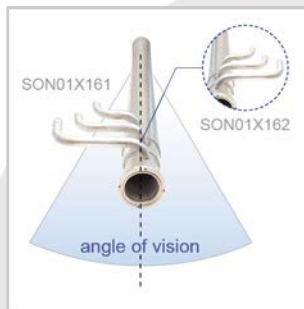
SON01X167



Housing SONDATEC 2.0 for cameras CAM12X17C and CAM12X17CT, designed for continuous operation with high temperatures up to 2200°C, water and air cooled. Angle of Sonda inclination 120°. Field of vision: UP. Made in Stainless Steel AISI310, diameter 89 mm, length 1200 mm (other on request). Connections for air and water placed on the LEFT side (back view). Water fitting 1/2" M-BSPP, flared 60°. Air 3/8" M-BSPP.

SON01X168

Housing SONDATEC 2.0 for cameras CAM12X17C and CAM12X17CT. Field of vision: UP. Connections for air and water placed on the RIGHT side (back view). Other features as SON01X167.



SON01X190

Housing SONDATEC 2.0 for cameras CAMTEC90 series, designed for continuous operation with high temperatures up to 2200°C, water and air cooled. Angle of view 90°. Made by Stainless Steel AISI310, diameter 89 mm (VERSION 2.0), length 1200 mm. Completed with back cover suitable for KITTEC connection series. Air fitting 1/2" F-BSPP, water 1/2" M-BSPP, flared 60°. Different lengths available on request.

SON05X400



Vision system for TOP-ROLL composed by "TRIPLE JACKET SHIRT" water circuit, length 4000 mm (others on request), camera module with high resolution B/W, high temperatures lens with diagonal angle of view 53° and diagonal vision of 90°. Outer sheath made of INOX AISI316L, diameter 89 mm. Connection to electrical signal through multi-polar connector MIL-STD. The product will be supplied fully assembled and tested (leak testing under pressure 10bar/24hour).

SON05X411

Vision system for TOP-ROLL composed by "TRIPLE JACKET SHIRT" water circuit, length 4000 mm (others on request), camera module with high resolution B/W, high temperatures lens with diagonal angle of view 53° and diagonal vision of 90°. Outer sheath made of INOX AISI316L, diameter 89 mm, with insulation made in Stainless Steel AISI304L, external diameter 101,6 mm. Connection to electrical signal through multi-polar connector MIL-STD. The product will be supplied fully assembled and tested (leak testing under pressure 10bar/24hour).

SON05X412



High temperature camera housing SONDATECpro series realized with "TRIPLE JACKET SHIRT" water circuit, length 4000 mm (others on request), designed for camera module CAMtec 12X series with diagonal angle of view 90°. Outer sheath made of AISI310S steel, diameter 89 mm. Complete with external thermal insulation realized with Ceramic fiber textile products whitin an additional Stainless Steel AISI304 tube with 101,6 mm. Cooling water connection 2x1" NPT (F), Nitrogen 1x1/2" NPT (F). Back cover complete with multi-polar metal connector MIL STD. The product will be supplied fully assembled and tested (leak testing under pressure 10bar/24hour).

SON01F005



Support for SONDATEC, made of AISI304 Stainless Steel.

SON01F010



Mechanical flange for matching SONDATEC 1.0 to OUTEK. Made by Stainless Steel AISI304, diameter 101,6 mm.

SON01F040

Mechanical flange for matching SONDATEC 2.0 to OUTEK or SONDATEC direct to wall furnace. Made by Stainless Steel.

SON01H000



Wall mounting bracket with 3 swivel joints for 3-axis adjustment for manual SONDATEC introduction. Made with stainless steel INOX AISI304.

SON01H001



Floor mounting bracket with 3 swivel joints for 3-axis adjustment for manual SONDATEC introduction. Made with stainless steel INOX AISI304.

HIGH TEMPERATURE CAMERA SYSTEMS UP TO 2200°C

▶ HIGH TEMPERATURE CAMERA SYSTEMS UP TO 2200°C

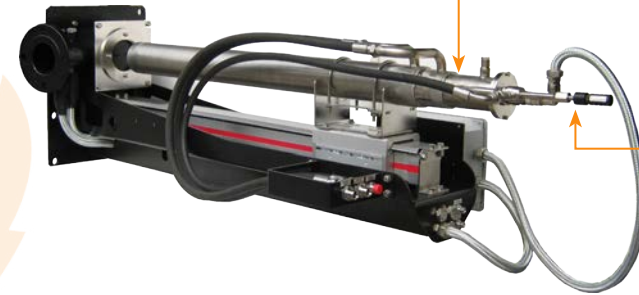
OU^{tec}*



Example of SON01X301 installed on the Outec

or

in^{tec}*



Example of SON01X161 installed on the Intec

Air vortex cooler (as option)

- External wall mounted
- Self protected
- Conical hole required

- Inside type with retraction device
- Mounting solutions: axial or inclined
- Self protected
- Axial hole required
- Wide angle of view available

*Depending of the application may be not required.

PROTECTION DEVICES

OUT03X100



Fixing and protection device for SONDATEC housing for furnace wall, complete with shutter and high temperature pneumatic cylinder. Water cooled with air barrier circuit. Made by Stainless Steel AISI304. Provided with insulator panel to be interjected on the wall and flexible tube for connection with housing, length 1m.

OUT03X200

Fixing and protection device for SONDATEC housing for furnace wall, complete with shutter and high temperature pneumatic cylinder. Air compressed cooled with air barrier circuit. Made by Stainless Steel AISI304. Complete with insulator panel.

OUT03X400



Protective device and mounting enclosures for SONDATEC 2.0 complete with locking flap controlled by a pneumatic cylinder in case of absence of air. Circuit for cooling water and compressed air barrier dam. Made by Stainless Steel AISI304.

ISOLATOR OUTEC

Thermal insulation panel $T_e=1260$ in sheet KAOWOOL, thickness= 10 mm for OUTEC version.

INTEC02X360



Advancement / withdrawal system for periscopes with pneumatic actuator (ride 600 mm). Consent the insertion and the extraction periscope and TV camera, provided with:

- Self supporting framework with rails and porthole plate. Realized in carbon steel varnished with epoxy pre-treatment 60 µm and painting with polyester 60 µm;
- Pneumatic cylinder with slide to support the SONDATEC;
- Porthole to be positioned on the counter plate, with mechanical shutter, centralizing ring and flange for air connection. Realized in Stainless Steel AISI304. Completed with thermostat to control over-temperature, set on 60°C.

INTEC02X380

Advancement / withdrawal system for periscopes with pneumatic actuator (ride 800 mm). Further characteristics as INTEC02X360.

INTEC02X440



Advancement / withdrawal system for SONDATEC series 01X703 with pneumatic actuator (ride 400 mm) provided with:

- Self supporting framework with rails and porthole plate. Realized in carbon steel varnished with epoxy pre-treatment 60 µm and painting with polyester 60 µm;
- Pneumatic cylinder with slide to support the SONDATEC;
- Porthole to be positioned on the counter plate, with mechanical shutter, centralizing ring and flange for air connection. Realized in Stainless Steel AISI304. Completed with thermostat to control over-temperature, set on 60°C.

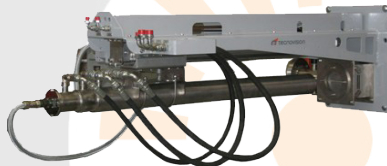
INTEC02X460

Advancement / withdrawal system for SONDATEC series 01X100, 01X101 o 01X102. With pneumatic actuator (ride 600 mm). Further characteristics as INTEC02X440.

INTEC02X480

Advancement / withdrawal system for SONDATEC series 01X12x. With pneumatic actuator (ride 800 mm). Further characteristics as INTEC02X440.

INTEC02X500



Advancement / withdrawal system for SONDATEC series 01X120, 01X121, 01X122, 01X125, 01X145, 01X160 o 01X190 with pneumatic actuator (ride 800 mm), provided with:

- Self supporting framework with rails and porthole plate. Realized in carbon steel varnished with epoxy pre-treatment 60 µm and painting with polyester 60 µm;
- Pneumatic cylinder with slide to support the SONDATEC;
- Porthole to be positioned on the counter plate, with mechanical shutter, centralizing ring and flange for air connection. Realized in Stainless Steel AISI304. Completed with thermostat to control over-temperature, set on 60°C.

ISOLATOR INTEC

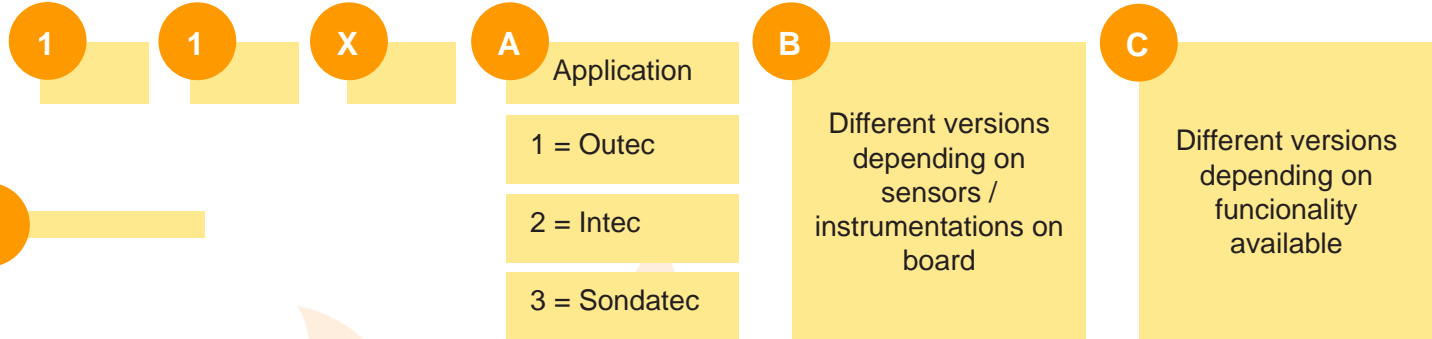
Thermal insulation panel in sheet KAOWOOL, thickness= 10 mm for INTEC version.

HIGH TEMPERATURE CAMERA SYSTEMS UP TO 2200°C

► HIGH TEMPERATURE CAMERA SYSTEMS UP TO 2200°C

Product code configuration table

cabtec



*for control cabinets made of GRP you have to add "P" at the end of the code.

Two segregated units to separate electrical and hydraulic parts



- Management and control of Outec or Sondatec products
- Air & Water cooling
- On Screen Display module available

CONTROL CABINETS

CAB11X100L



Control cabinet with logic controller for OUTEK device. Supplied with the following instrumentations:

- Logic controller with display
- Double stage air filtration unit with dual pressure control valve with gauge
- Air pressostat switch
- Electrovalve for open/close control of OUTEK shutter
- Water flow switch
- Water thermostwitch
- Overtemperature camera alarm management
- Front panel push buttons and signals led's

Cabinet includes power supply module and coaxial cable connector "ELPRO", with local BNC socket for local video test.

Water pipes in copper and air pipes in Rilsan Pa11. Fittings outside cabinet are 1/2" M-BSPP.

Double cabinet in painted RAL7035 steel, IP66. Dimensions: 800x500x200 mm. Power requirements 90-256 Vac, 50/60 Hz.

Operating temperature: +5°C/+55°C.

CAB11X100A



Control cabinet with logic controller for OUTEK device. Supplied with the following instrumentations:

- Logic controller with display
- Double stage air filtration unit with dual pressure control valve with gauge
- Air pressostat switch
- Electrovalve for open/close control of OUTEK shutter
- Water flow switch
- Water thermostwitch
- Temperature camera sensor management
- Front panel push buttons and signals led's

Cabinet includes power supply module and coaxial cable connector "ELPRO", with local BNC socket for local video test.

Water pipes in copper and air pipes in Rilsan Pa11. Fittings outside cabinet are 1/2" M-BSPP.

Double cabinet in painted RAL7035 steel, IP66. Dimensions: 800x500x200 mm. Power requirements 90-256 Vac, 50/60 Hz.

Operating temperature: +5°C/+55°C.

CAB11X100B



Control cabinet with logic controller and OSD module for OUTEK device. Supplied with the following instrumentations:

- Logic controller with display
- On Screen Display function for signalling and alarm info over video signal
- Double stage air filtration unit with dual pressure control valve with gauge
- Air pressostat switch
- Electrovalve for open/close control of OUTEK shutter
- Water flow switch
- Water thermostwitch
- Temperature camera sensor management
- Front panel push buttons and signals led's

Cabinet includes power supply module and coaxial cable connector "ELPRO", with local BNC socket for local video test.

Water pipes in copper and air pipes in Rilsan Pa11. Fittings outside cabinet are 1/2" M-BSPP.

Double cabinet in painted RAL7035 steel, IP66. Dimensions: 800x500x200 mm. Power requirements 90-256 Vac, 50/60 Hz.

Operating temperature: +5°C/+55°C.

CAB11X101C



Control cabinet with logic controller and OSD module for OUTEC device. Supplied with the following instrumentations:

- Logic controller with display
- On Screen Display function for signaling and alarm info over video signal
- Double stage air filtration unit with dual pressure control valve with gauge
- Air pressostat switch
- Electrovalve for open/close control of OUTEC shutter
- Water electronic flow switch
- Water temperature sensor
- Temperature camera sensor management
- Front panel push buttons and signals led's

Cabinet includes power supply module and coaxial cable connector "ELPRO", with local BNC socket for local video test.

Water pipes in copper and air pipes in Rilsan Pa11. Fittings outside cabinet 1/2" M-BSPP.

Double cabinet in painted RAL7035 steel, IP66. Dimensions: 800x500x200 mm. Power requirements 90-256 Vac, 50/60 Hz.

Operating temperature +5°C/+55°C.

CAB11X102D

Control cabinet with logic controller for OUTEC device. Supplied with the following instrumentations:

- Logic controller with display
- Double stage air filtration unit with dual pressure control valve with gauge
- Air pressostat switch
- Electrovalve for open/close control of OUTEC shutter
- Water flow switch
- Water temperature sensor
- Temperature camera sensor management
- Alarm Relay Module
- Front panel push buttons and signals led's

Cabinet includes power supply module and coaxial cable connector "ELPRO", with local BNC socket for local video test.

Water pipes in copper and air pipes in Rilsan Pa11. Fittings outside cabinet are 1/2" M-BSPP.

Double cabinet in painted RAL7035 steel, IP66. Dimensions 800x500x200 mm. Power requirements 90-256 Vac, 50/60 Hz.

Operating temperature +5°C/+55°C.

CAB11X200L

Control cabinet with logic controller for INTEC device. Supplied with the following instrumentations:

- Logic controller with display
- Double stage air filtration unit with dual pressure control valve with gauge
- Air pressostat switch
- Electrovalve for insertion/extraction camera
- Air Reservoir
- Water flow switch
- Water thermostwitch
- Camera thermostwitch management
- Front panel push buttons and signals led's

Cabinet includes power supply module and coaxial cable connector "ELPRO", with local BNC socket for local video test.

Water pipes in copper and air pipes in Rilsan Pa11. Fittings outside cabinet are 1/2" M-BSPP.

Double cabinet as painted RAL7035 steel, IP66. Dimensions: 1200x500x310 mm. Power requirements 90-256 Vac 50/60 Hz.

Operating temperature: +5°C/+55°C.



CAB11X201A

Control cabinet with logic controller for INTEC device. Supplied with the following instrumentations:

- Logic controller with display
- Double stage air filtration unit with dual pressure control valve with gauge
- Air pressostat switch
- Electrovalve for insertion/extraction camera
- Air Reservoir
- Water flow switch
- Water temperature sensor
- Camera temperature sensor management
- Cabinet heater
- Front panel push buttons and signals led's

Cabinet includes power supply module and coaxial cable connector "ELPRO", with local BNC socket for local video test.

Water pipes in copper and air pipes in Rilsan Pa11. Fittings outside cabinet are 1/2" M-BSPP.

Double cabinet as painted RAL7035 steel, IP66. Dimensions: 1200x500x310 mm. Power requirements 90-256 Vac 50/60 Hz. Operating temperature:

+5°C/+55°C.

CAB11X202B



Control cabinet with logic controller and OSD module for INTEC device. Supplied with the following instrumentations:

- Logic controller with display
- On Screen Display function for signaling and alarm info over video signal
- Double stage air filtration unit with dual pressure control valve with gauge
- Air pressostat switch
- Electrovalve for insertion/extraction camera
- Air Reservoir
- Water electronic flow switch
- Water temperature sensor
- Camera temperature sensor management
- Cabinet heater
- Front panel push buttons and signals led's

Cabinet includes power supply module and coaxial cable connector "ELPRO", with local BNC socket for local video test. Water pipes in copper and air pipes in Rilsan Pa11. Fittings outside cabinet are 1/2" M-BSPP.

Double cabinet as painted RAL7035 steel, IP66. Dimensions: 1200x500x310 mm. Power requirements 90-256 Vac 50/60 Hz.

Operating temperature: +5°C/+55°C.

CAB11X202C



Control cabinet with logic controller and OSD module for INTEC device. Supplied with the following instrumentations:

- Logic controller with display and Ethernet connection
- Datalog function for event record
- On Screen Display function for signaling and alarm info over video signal
- Double stage air filtration unit with dual pressure control valve with gauge
- Air pressostat switch
- Electrovalve for insertion/extraction camera
- Air Reservoir
- Water electronic flow switch
- Water temperature sensor
- Camera and intec oblò temperature sensor management
- Cabinet heater
- Front panel push buttons and signals led's

Cabinet includes power supply module and coaxial cable connector "ELPRO", with local BNC socket for local video test. Water pipes in copper and air pipes in Rilsan Pa11. Fittings outside cabinet are 1/2" M-BSPP.

Double cabinet as painted RAL7035 steel, IP66. Dimensions: 1200x500x310 mm. Power requirements 90-256 Vac 50/60 Hz.

Operating temperature: +5°C/+55°C.

CAB11X300B



Control cabinet with logic controller for camera CAMTEC and SONDATEC device. Supplied with the following instrumentations:

- Logic controller with display
- On Screen Display function for signaling and alarm info over video signal
- Temperature camera sensor management

Cabinet includes power supply module and coaxial cable connector "ELPRO", with local BNC socket for local video test. Double cabinet in painted RAL7035 steel, IP66. Dimensions: 300x500x200 mm. Power requirements 90-256 Vac 50/60 Hz. Operating temperature: +5°C/+55°C.

CAB11X301A

Control cabinet with logic controller for camera CAMTEC and SONDATEC device. Supplied with the following instrumentations:

- Logic controller with display
- Double stage air filtration unit with pressure control valve with gauge
- Air pressostat switch
- Water flow switch
- Water temperature sensor
- Temperature camera sensor management

Power presence and alarm signals led's on front cabinet door.

Cabinet includes power supply module and coaxial cable connector "ELPRO", with local BNC socket for local video test.

Water pipes in copper and air pipes in Rilsan Pa11. Fittings outside cabinet are 1/2" M-BSPP.

Double cabinet in painted RAL7035 steel, IP66. Dimensions: 800x500x200 mm. Power requirements 90-256 Vac 50/60 Hz. Operating temperature: +5°C/+55°C.

CAB11X301B



Control cabinet with logic controller for camera CAMTEC and SONDATEC device. Supplied with the following instrumentations:

- Logic controller with display
- On Screen Display function for signaling and alarm info over video signal
- Double stage air filtration unit with pressure control valve with gauge
- Air pressostat switch
- Water flow switch
- Water temperature sensor
- Temperature camera sensor management

Power presence and alarm signals led's on front cabinet door.

Cabinet includes power supply module and coaxial cable connector "ELPRO", with local BNC socket for local video test.

Water pipes in copper and air pipes in Rilsan Pa11. Fittings outside cabinet are 1/2" M-BSPP.

Double cabinet in painted RAL7035 steel, IP66. Dimensions: 800x500x200 mm. Power requirements 90-256 Vac 50/60 Hz. Operating temperature: +5°C/+55°C.

CAB11X302B



Control cabinet with logic controller for camera CAMTEC and SONDATEC device. Supplied with the following instrumentations:

- Logic controller with display
- On Screen Display function for signalling and alarm info over video signal
- Double stage air filtration unit with pressure control valve with gauge
- Air pressostat switch
- Temperature camera sensor management
- Electrovalve for "ECO" function management

Power presence and alarm signals led's on front cabinet door.

Cabinet includes power supply module and coaxial cable connector "ELPRO", with local BNC socket for local video test.

Water pipes in copper and air pipes in Rilsan Pa11. Fittings outside cabinet are 1/2" M-BSPP.

Double cabinet in painted RAL7035 steel, IP66. Dimensions: 800x500x200 mm. Power requirements 90-256 Vac, 50/60 Hz.

Operating temperature: +5°C/+55°C.

CAB11X303E

Control cabinet for CAMTEC camera and SONDATEC device. Supplied with the following instrumentations:

- Double stage air filtration unit with pressure control valve with gauge
- Air pressostat switch
- Water flow switch (W/Display)
- Water temperature sensor (4-20mA)

Power presence and alarm signals led's on front cabinet door.

Cabinet includes power supply module and coaxial cable connector "ELPRO", with local BNC socket for local video test.

Water pipes in copper and air pipes in Rilsan Pa11. Fittings IN/OUT cabinet M-BSPP sv. 60°.

Double cabinet in painted RAL7035 steel, IP66. Dimensions: 800x500x200 mm. Power requirements 90-256 Vac, 50/60 Hz.

Operating temperature: +5°C/+55°C.

CAB11X304E

Control cabinet for two CAMTEC cameras and SONDATEC devices. Supplied with the following instrumentations:

- Pressure regulator
- Double stage air filtration unit with pressure control valve with gauge
- Double Air pressostat switch
- Water flow switch (W/Display)
- Water temperature sensor (4-20mA)

Power presence and alarm signals led's on front cabinet door.

Cabinet includes power supply module and coaxial cable connector "ELPRO", with local BNC socket for local video test.

Water pipes in copper and air pipes in Rilsan Pa11. Fittings IN/OUT cabinet M-BSPP sv. 60°.

Double cabinet in painted RAL7035 steel, IP66. Dimensions: 800x500x200 mm. Power requirements 90-256 Vac, 50/60 Hz.

Operating temperature: +5°C/+55°C.

FOR DIFFERENT MODELS FROM THE VALUES DETAILED, REFER TO THE FOLLOWING TABLE.

	PRESSURE REGULATOR WITH TWO GAGES	DUAL PRESSURE REGULATOR WITH TWO GAGES	TWO STAGES AIR FILTER	PRESSURE AIR SWITCH	2 WAY ELECTROVALVE	5 WAY ELECTROVALVE	H2O FLOW SWITCH (ON/OFF)	H2O FLOW SWITCH WITH VISIBLE LEVEL (ON/OFF)	H2O FLOW METER (WITHOUT DISPLAY)	H2O FLOW METER (W/DISPLAY)	H2O THERMOSTAT	H2O TEMPERATURE SENSOR (PT100)	H2O TEMPERATURE SENSOR (4-20 mA)	CABINET HEATER	CAMERA TEMPERATURE SENSOR MANAGEMENT	INTEC OBLO' TEMP. SENSOR MANAGEMENT	DIGITAL LOGIC MODULE WITH DISPLAY	2 IN ANALOGUE EXPANSION MODULE	FURTHER 2 IN ANALOGUE EXPANSION MODULE	ADDITIONAL ALARM RELAY MODULE	OSD MODULE
CAB11X100L		X	X	X	X		X				X						X				
CAB11X100A		X	X	X	X		X					X			X		X	X			
CAB11X100B		X	X	X	X		X					X			X		X	X		X	X
CAB11X101A		X	X	X	X			X				X			X		X	X			
CAB11X101C		X	X	X	X				X			X			X		X	X		X	X
CAB11X102D		X	X	X	X		X					X			X		X	X		X	
CAB11X102E		X	X	X	X		X					X									
CAB11X103E		X	X	X	X		X						X								
CAB11X104E									X		X										
CAB11X200L		X	X	X		X		X			X						X				
CAB11X201A		X	X	X		X		X				X		X	X		X	X			
CAB11X201D		X	X	X		X		X				X		X	X	X	X	X		X	X
CAB11X202B		X	X	X		X			X			X		X	X		X	X		X	X
CAB11X202C		X	X	X		X			X			X		X	X	X	X	X	X	X	X
CAB11X202D		X	X	X		X															
CAB11X202E									X			X		X	X		X	X	X	X	
CAB11X203		X	X	X		X			X			X		X							
CAB11X300B															X		X	X		X	X
CAB11X301A	X		X	X			X					X			X		X	X			
CAB11X301B	X		X	X			X					X			X		X	X		X	X
CAB11X302B	X		X	X	X							X			X		X	X		X	X
CAB11X303E	X		X	X			X						X								
CAB11X304E	X		X	2						X			X								

*for control cabinets made of GRP you have to add "P" at the end of the code.

CODES TABLE OF CONTROL CABINETS

ACCESSORIES

▶ ACCESSORIES

Product code configuration table

kit^{tec}

1

0

X

A

B

C

D

1

0

X

A

B

C

D

Code	Type of connection				
	Water	Water	Cleaning Air	Actuator Air	Barrier Air
A	1x1/2"FD-FD	1x1/2"FD-F90	1x3/8"FD-F90	-	-
B	1x1/2"FD-F90	1x1/2"FD-F90	1x3/8"FD-F90	-	-
C	1x1/2"FD-FD	1x1/2"FD-F90	1x3/8"FD-F90	1x1/4"FD-FD	1x3/8"FD-F90
D	1x1/2"FD-F90	1x1/2"FD-F90	1x3/8"FD-F90	2x1/4"FD-FD	1x3/8"FD-F90
E	1x1/2"FD-F90	1x1/2"FD-F90	1x3/8"FD-F90	2x1/4"FD-FD	-
F	1x1/2"FD-FD	1x1/2"FD-FD	1x3/8"FD-FD	-	-
G	1x1/2"F90-F90	-	-	-	-
H	-	-	1x1/4"F90-FD	-	-
I	-	-	1x1/4"F90-FD	-	-
J	1x1/2"F90-FD	1x1/2"F90-FD	1x1/4"F90-FD	-	-



Type of APPLICATION	
ELECTRICAL	1 = HIGH TEMP. CABLE
	2 = NO HIGH TEMP. CABLE
	3 = HIGH TEMP. + TEMP. SENS.
AIR & WATER CONNECTIONS	A = Sondatec 1.0 to Cabtec
	B = Sondatec 2.0 to Cabtec
	C = Sondatec 1.0 + Outec 1.0 to Cabtec
	D = Sondatec 2.0 + Outec 2.0 to Cabtec
	E = Sondatec 2.0 + Intec to Cabtec
	F = Sondatec 2.0 to Intec
	G = Sondatec 1.0 to Outec 1.0
	H = Airtec to JBX
	I = Acquatec (only air) to JBX
	J = Acquatec (air+H ₂ O) to JBX

Type of CONDUIT / TERMINATION	
ELECTRICAL	1 = GSWB with MIL-Std connector one-side
	2 = GSWB with MIL-Std connector two-sides
	3 = GSWB without MIL-Std connector
	4 = PVC with MIL-Std connector one-side
AIR & WATER CONN.	A = GSWB / B
	B = R1 / SS316
	C = R1 / B

Type of reinforcement:
 GSWB = Galvanized steel wire braided
 R1 = Wire braided reinforced

Type of termination:
 B = Nichel plated brass

LENGTH Cables & Pipes
A = 1,5 m
B = 2 m
C = 3 m
D = 4 m
E = 5 m
F = 6 m
G = 7 m
H = 8 m
I = 9 m
L = 10 m
Q = 15 m
S = 17 m
V = 20 m

VERSION
IS IDENTIFIED WITH PROGRESSIVE NUMBERING 1, 2, 3, 4, 5 ... FOR CHANGES TO THE MODEL CLASSIFIED WITH 0

CONNECTION KIT

ACCESSORIES

TCOXHT0001



High temperature special cable for video, power and data 1xRG178 + 2x18AWG + 4x22AWG/ST-FEP-GS-BI (price for meter).

KIT10X11D0

Electrical signal interconnection kit cable, composed by high temperature cable consisting of 1 coax RG178 + 2x18AWG + 4x22AWG/ST-FEP-GS-BI with overall shield tinned copper braid. Complete with MIL-STD connector one side. Protected inside a flexible galvanized steel wire braided. Length = 4m.

KIT10X11E0

Electrical signal interconnection kit cable, composed by high temperature cable consisting of 1 coax RG178 + 2x18AWG + 4x22AWG/ST-FEP-GS-BI with overall shield tinned copper braid. Complete with MIL-STD connector one side. Protected inside a flexible galvanized steel wire braided. Length = 5m.

KIT10X11L0

Electrical signal interconnection kit cable, composed by high temperature cable consisting of 1 coax RG178 + 2x18AWG + 4x22AWG/ST-FEP-GS-BI with overall shield tinned copper braid. Complete with MIL-STD connector one side. Protected inside a flexible galvanized steel wire braided. Length = 10m.

KIT10X11Q0

Electrical signal interconnection kit cable, composed by high temperature cable consisting of 1 coax RG178 + 2x18AWG + 4x22AWG/ST-FEP-GS-BI with overall shield tinned copper braid. Complete with MIL-STD connector one side. Protected inside a flexible galvanized steel wire braided. Length = 15m.

KIT10X12L0

Electrical signal interconnection kit cable, composed by high temperature cable consisting of 1 coax RG178 + 2x18AWG + 4x22AWG/ST-FEP-GS-BI with overall shield tinned copper braid. Complete with MIL-STD connector both sides. Protected inside a flexible galvanized steel wire braided. Length = 10m.

KIT10X12V0

Electrical signal interconnection kit cable, composed by high temperature cable consisting of 1 coax RG178 + 2x18AWG + 4x22AWG/ST-FEP-GS-BI with overall shield tinned copper braid. Complete with MIL-STD connector both sides. Protected inside a flexible galvanized steel wire braided. Length = 20m.

KIT10X13B0

Electrical signal interconnection kit cable, composed by high temperature cable consisting of 1 coax RG178 + 2x18AWG + 4x22AWG/ST-FEP-GS-BI with overall shield tinned copper braid. Protected inside a flexible galvanized steel wire braided. Length = 2m.

KIT10X23L0

Electrical signal interconnection kit cable, composed by 1 Mini RG59 + 2x0,75 + 4x0,22 blue. Protected inside a flexible galvanized steel wire braided. Length = 10m.

KIT10X24L0

Electrical signal interconnection kit cable, protected inside a metal armored flexible tube PVC self-extinguishing coated with excellent resistance to atmospheric agents, oils, salt air, mineral acids. Self-extinguishing V0 according to UL94 (type L). Complete with MIL-STD connector both sides. Length = 10m.

KIT10XHAB0



Kit flexible hoses for hydraulic/pneumatic connection between Airtec to JBX, composed by: 1x1/4"FD-F90, BSPP standard. Protected inside a galvanized steel wire braided with nichel plated brass terminations. Length = 2m.

KIT10XBAD0

Kit flexible hoses for hydraulic/pneumatic connection between Sondatec 2.0 to Cabtec, composed by: 2x1/2"FD-F90 + 1x3/8"FD-F90, BSPP standard. Protected inside a galvanized steel wire braided with nichel plated brass terminations. Length = 4m.

KIT10XBAL0

Kit flexible hoses for hydraulic/pneumatic connection between Sondatec 2.0 to Cabtec, composed by: 2x1/2"FD-F90 + 1x3/8"FD-F90, BSPP standard. Protected inside a galvanized steel wire braided with nichel plated brass terminations. Length = 10m.

FOR DIFFERENT LENGTHS FROM THE VALUES DETAILED, REFER TO THE PREVIOUS TABLE.

ACCESSORIES

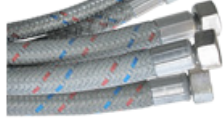
ACCESSORIES

KIT10XCAD0



Kit flexible hoses for hydraulic/pneumatic connection between Sondatec 1.0+Outec 1.0 to Cabtec, composed by: 1x1/2"FD-FD + 1x1/2"FD-F90 + 2x3/8"FD-F90 + 1x1/4"FD-FD, BSPP standard. Protected inside a galvanized steel wire braided with nichel plated brass terminations. Length = 4m.

KIT10XCAL0



Kit flexible hoses for hydraulic/pneumatic connection between Sondatec 1.0+Outec 1.0 to Cabtec, composed by: 1x1/2"FD-FD + 1x1/2"FD-F90 + 2x3/8"FD-F90 + 1x1/4"FD-FD, BSPP standard. Protected inside a galvanized steel wire braided with nichel plated brass terminations. Length = 10m.

KIT10XDAF0



Kit flexible hoses for hydraulic/pneumatic connection between Sondatec 2.0+Outec 2.0 to Cabtec, composed by: 2x1/2"FD-F90 + 2x3/8"FD-F90 + 2x1/4"FD-FD, BSPP standard. Protected inside a galvanized steel wire braided with nichel plated brass terminations. Length = 6m.

KIT10XEAQ0



Kit flexible hoses for hydraulic/pneumatic connection between Sondatec 1.0+Intec 1.0 to Cabtec, composed by: 2x1/2"FD-F90 + 1x3/8"FD-F90 + 2x1/4"FD-FD, BSPP standard. Protected inside a galvanized steel wire braided with nichel plated brass terminations. Length = 15m.

KIT10XEBL0



Kit flexible hoses for hydraulic/pneumatic connection between Sondatec 1.0+Intec to Cabtec, composed by: 2x1/2"FD-F90 + 1x3/8"FD-F90 + 2x1/4"FD-FD, BSPP standard. Protected inside a wire braided reinforced and cover in black, oil and environment resistant synthetic rubber with AISI316L Stainless Steel terminations. Length = 10m.

07H005

Quartz protection glass for high temperature, diameter 65 mm, sp. 2,2 mm.

GFA13X100



Double stage compressed air filter unit for temperature up to 65°C endowed with pressure regulator and manometer.

GFA13X001



Compressed air filter unit, with three filtering stage up to 0,01 µm, complete with pressure regulation unit and pressure gauges.

GFA13X004



Compressed air filter unit, with three filtering stage up to 0,01 µm, complete with adjustable pressure for air instruments, range from 0.5 to 8 bar. Attack 1/4". Aluminium body, pressure regulation unit and pressure gauges.

C0.1XGFA13X100



0.01 µm filter element for air filter assembly GFA13X100.

T4344-01



Filter cardrige 0,01 µm.

T4338-04



Filter cardrige 5 µm 4338-04.

FOR DIFFERENT KIT LENGTHS FROM THE VALUES DETAILED, REFER TO THE PREVIOUS TABLE.

ACCESSORIES