

## GENERAL CHARACTERISTICS

Level controls with 2 electrical contacts, reliable, compact and easy to install. Designed to offer a range of level switches to meet the request for a cheap monitoring of the level in small tanks. Rugged construction and low maintenance.



- **Stainless steel – AISI 316**
- Flanged or threaded connection
- Hermetic and replaceable electrical contacts
- Operating ambient temperature -30/+55°C – UR 90%
- Minimum degree of protection IP65

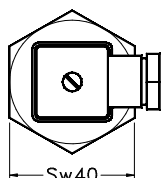
## TECHNICAL DATA Tab.1

	Description									Codice
Float	∅ 30 x 32 mm			P.S. 0, 75			30 Bar			S29
	∅ 30 x 32 mm			P.S. 0, 55			10 Bar			S32
Rod length L0 mm	0150	0200	0250	0300	0350	0400	0450	0500	--	L0.S
Process connection	Threaded			1" UNI 228/1 male thread			SW 40			25GS
	Flanged			Double fixing (2 or 3 holes)			∅ 55 mm			FSPX
Electrical contact	SPST	N.C.	N.A.	Overturning the float of 180°		300 VAC 350 VDC	50W	70VA	0,5A 0,7A	3
Electrical output	DIN 43650 Plug					IP 65				S1
Max. temperature °C	105°C									L
Sealing gasket	Viton flat gasket									2

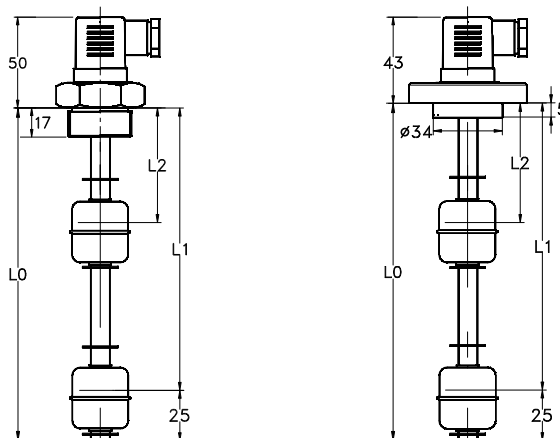
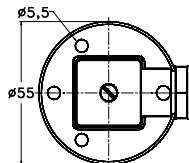
## DIMENSIONS mm. Tab.2

	L0							
	150	200	250	300	350	400	450	500
L2	50	60	60	60	60	70	70	80
L1	125	175	225	275	325	375	425	475

Threaded version 1" UNI-228/1

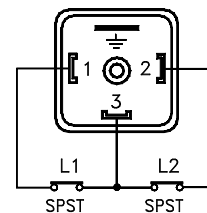


Flanged version  
2 holes on ∅43 - 3 holes on ∅42



## WIRING Tab.3

C	Common	Common wired contacts
2	NC L1	Contact status in no level condition
2	NC L2	



## NOMENCLATURE

M2	S29	3	0500	S	FSPX	S1	L	2	C22
•									
	•								
		•							
			•						
				•					
					•				
						•			
							•		
								•	
									•
									•

	Type
Tab.1	Float
Tab.1	Electrical contact
Tab.2	Total length = L0 mm.
Tab.1	Rod material
Tab.1	Process connection
Tab.1	Electrical output
Tab.1	Temperature class
Tab.1	Sealing gasket
Tab.3	Wiring