

## Anemometer cups with multiple outputs for industry-standard SIT certificate

ANTC-V2.2 is an anemometer, which meets every requirement of use in electronics. Is in fact equipped with its own programmable logic and, thanks to a large range of power supply, from 10 to 30Vdc, can be used for any on-board detection of wind turbines in the presence of sources of power from batteries 12 and 24 vdc.

Its output signal can be configured for pulse output, voltage output 0-5 / 1-5 / 0-10 / 2-10 Vdc, current output 0-20 / 4-20 mA.

It can be connected through the various outputs available depending on the model directly to PLC and / or board electronic market, tachometers WM44P as the model of our product range.

The body of the rotor is machined Stainless Steel 316. The head rotates on ball bearings. The cups are made of nylon shock-absorbent and easily interchangeable. It also features a convenient connector for connection. The count rate is via optical transducer, a digital encoder with 12 pulses per revolution.

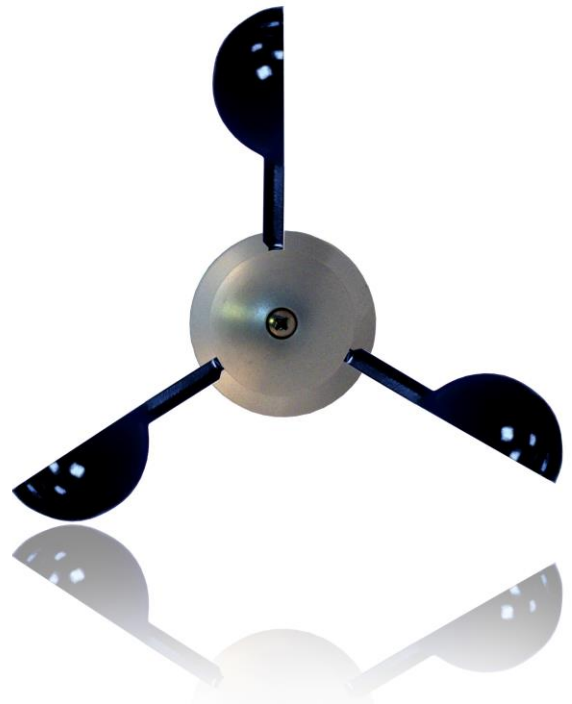
It is produced in the following versions:

- Impulsive Frequency output (Hz)
- Analogic Voltage output 0-5 / 0-10 Vdc
- Analogic Voltage output 1-5 / 2-10 Vdc
- Analogic Current output 0-20 / 4-20 mA

Each anemometer is equipped with Nylon Cups interchangeable, stainless steel support, 5 pin M12 screw connector.

EACH TRANSDUCER IS TESTED IN A WIND TUNNEL AND EQUIPPED WITH A CALIBRATION CERTIFICATE.

It runs on request, a periodic calibration and calibration product.



**The ANTC-V2.2 Stainless Steel Anemometer is particularly suitable for highly corrosive environments or in saline environments, therefore on port cranes or by ship.**

The Anemometer ANTC-V2.2 has been specifically designed for industrial applications such as:

- Cranes and Mobile Cranes
- Buildings and general structures
- Photovoltaic solar trackers
- Wind turbines
- Weather Stations
- Irrigation systems
- Automated greenhouses
- Cable cars for ski plants
- Cannons snow
- Telescopic cranes
- Platforms self-mounting
- Structures for playgrounds
- Ornamental fountains
- Pressostatic structures
- Highway tunnels and viaducts



INOX AISI 316

## Main Features

- Robust, reliable, suitable for heavy duty industrial use in extreme conditions
- Range of use 2-200km/h
- Stainless steel ball bearings
- Body in Stainless Steel AISI 316
- Jack connector M12
- Stainless steel support



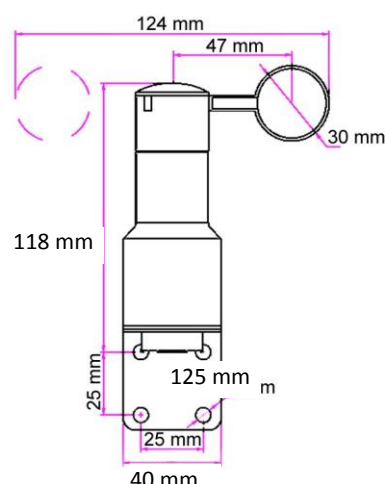
## Mechanical Features

- IP66 degree protection
- Operating temperature -20° + 85°C
- Stock temperature -40° + 125°C
- Overall size on a side draw
- Weight 700 g connection cable excluded
- Measurement range from 2 to 200 km/h
- Medium error 0,06 %
- Standard deviation error 1,01 %
- Analysis done in a wind tunnel with a 0 to 200 m/s wind speed exceeding

### Dimensions

- Body rotor: H 115 mm
- Body rotor + support: H 154 mm
- Diam. min. top body rotor: 29 mm
- Diam. max. bottom body rotor: 40 mm
- Diam. max. rotating head with cups assembled: 125 mm
- Stainless steel support assembled. Dimensions: H 50 mm / W 40 mm

The anemometer consists of Stainless Steel body and rotor with a removable hat for the mechanical seal of a Nylon Cups shockproof, UV ray, low temperature and hailstorm resistant. Rotating on a Ball Bearings, moves a cogwheel that through a photodiode gives 12 pulses per 1 rotation.



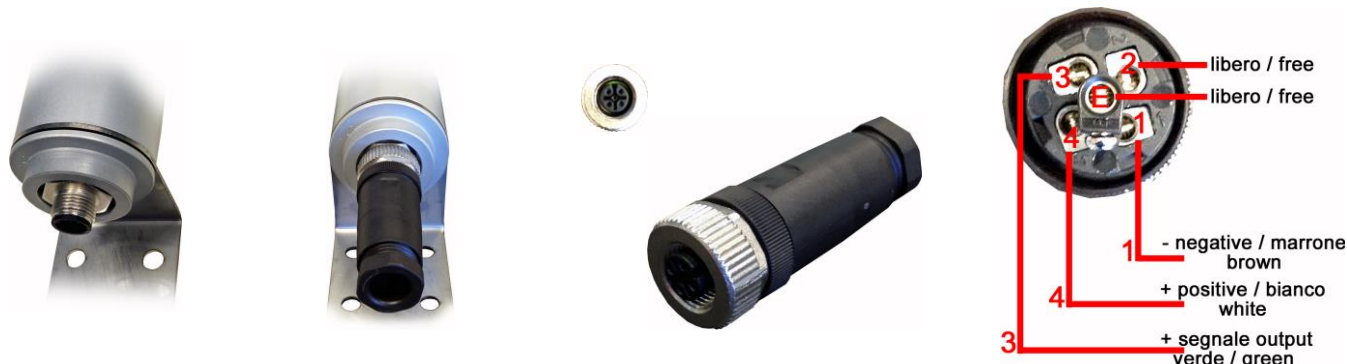
## Electrical Features

Items	ANTC_V2.2_Hz	ANTC_V2.2_Vdc	ANTC_V2.2_mA
Power supply	10 / 30 Vdc	10 / 30 Vdc	10 / 30 Vdc
Signal output that can be configurable by manufacturer	Frequency	Voltage. Output to be configurable by manufacturer: 0-5 / 1-5 / 0-10 / 2-10 Vdc	Current. Output to be configurable by manufacturer: 0-20 / 4-20 mA
Current / Consumption	50 mA	50 mA	50 mA
Measuring range of mechanical and electrical	2-200 Km/h	2-200 Km/h	2-200 Km/h
Configurable by manufacturer Fullscale	.....	0-100 0-120 0-180 0-200	0-100 0-120 0-180 0-200
Impedance maximum load	.....	.....	Equal or less than 500 ohm
Current maximum load	10 mA	10 mA	.....
Cable length pre wired	Every length can be requested	Every length can be requested	Every length can be requested

**CAUTION:** Use shielded cable 3x0,5 sq mm - the braided shield MUST NOT BE CONNECTED to the ground connector but completely isolated. It should be connected to ground only from the connection to the PLC electronics, display or electronic ANT\_C

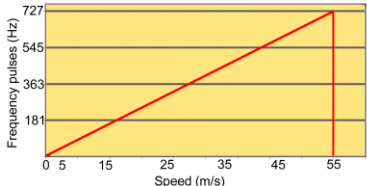
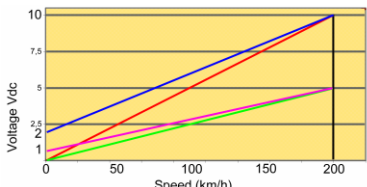
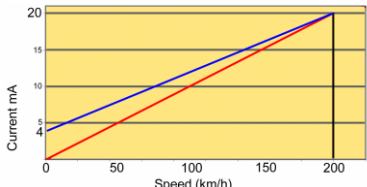
INOX AISI 316

## Special Connector M12 5 PINS Model



## Operation

ANTC-V2.2 anemometer can be configured by manufacturer on the following features:

Model	Configurable outputs	Operation	Graphics
ANTC_V2.2_Hz	Frequency output	Relation between Wind Speed – Frequency output. The output pulses are proportional to the wind speed in relation with the graphic in the right column.	
ANTC_V2.2_Vdc	Voltage output	Relation between Wind Speed – Voltage output. The voltage output is proportional to the wind speed in relation with the graphic in the right column.  These follow are configurable sets: 0-5 / 1-5 / 0-10 / 2-10 Vdc  The graph to the side is represented in function of the maximum speed configurable = 200 km / h  Are available the follow Fullscale value:  200 km/h 180 km/h 120 km/h 100 km/h	 Scale 0-5 Vdc green line Scale 1-5 Vdc lilac line Scale 0-10 Vdc red line Scale 2-10 Vdc blue line
ANTC_V2.2_mA	Current output	Relation between Wind Speed – Current output. The current output is proportional to the wind speed in relation with the graphic in the right column. These follow are configurable sets: 0-20 / 4-20 mA The graph to the side is represented in function of the maximum speed configurable = 200 km / h Are available the follow Fullscale value:  200 km/h 180 km/h 120 km/h 100 km/h	 Scale 0-20 mA red line Scale 4-20 mA blue line

Warning: 500 ohm maximum load

INOX AISI 316

## Accessories

### Nylon Cups

Reinforced by the hail, resistant from -40°C to +120°C, diam. 30mm, interchangeable. In the kit are included 3+1 stock cups



### Stainless-steel bracket

Already assembled. Dimensions: height 42mm, width 39mm.



## Optional Items

It is possible to match the anemometer with a **programmable display** with 2 contact relay output to visualize data in real time and signalize alarm.



WM44-P  
For door  
application



WM44-SS  
For door  
application



WM44-DRM  
DIN rail