

Anemometer cups with multiple outputs for industry-standard SIT certificate

ANTC-V2.2 is an anemometer, which meets every requirement of use in electronics. Is in fact equipped with its own programmable logic and, thanks to a large range of power supply, from 10 to 30Vdc, can be used for any on-board detection of wind turbines in the presence of sources of power from batteries 12 and 24 vdc.

Its output signal can be configured for pulse output, voltage output 0-5 / 1-5 / 0-10 / 2-10 Vdc, current output 0-20 / 4-20 mA.

It can be connected through the various outputs available depending on the model directly to PLC and / or board electronic market, tachometers WM44P as the model of our product range.

The body of the rotor is machined aluminum. The head rotates on ball bearings. The cups are made of nylon shock-absorbent and easily interchangeable. It also features a convenient connector for connection. The count rate is via optical transducer, a digital encoder with 12 pulses per revolution.

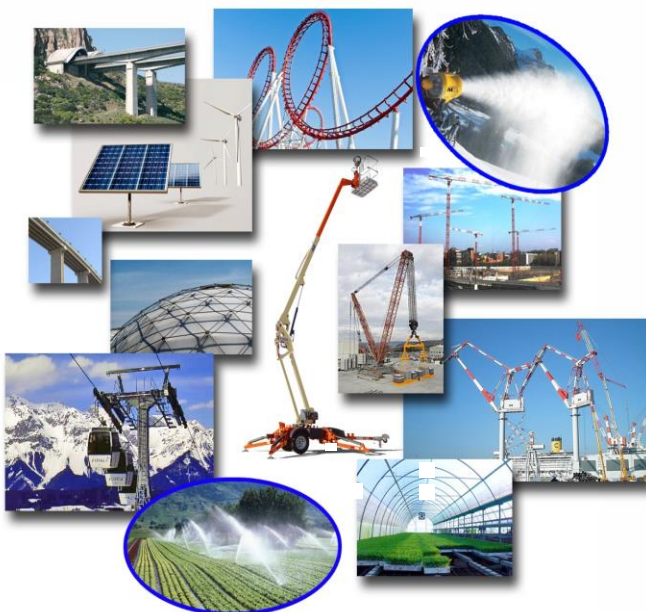
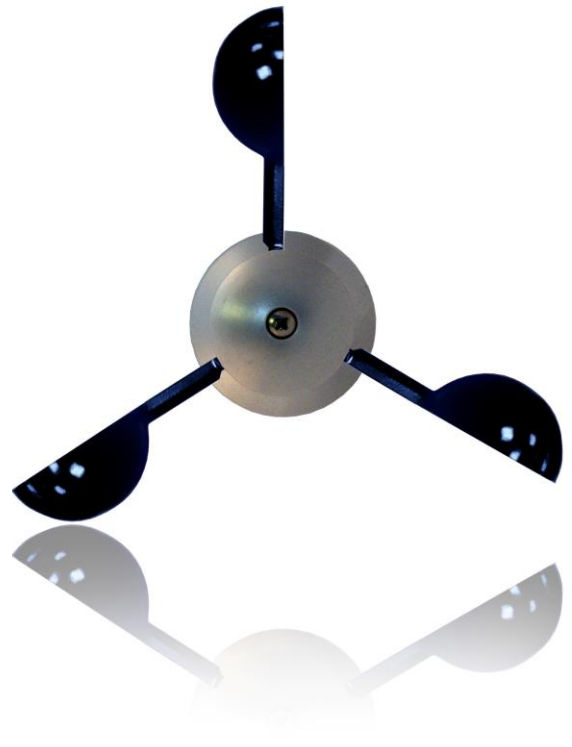
It is produced in the following versions:

- Impulsive Frequency output (Hz)
- Analogic Voltage output 0-5 / 0-10 Vdc
- Analogic Voltage output 1-5 / 2-10 Vdc
- Analogic Current output 0-20 / 4-20 mA

Each anemometer is equipped with Nylon Cups interchangeable, stainless steel support, 3 pin to solder jack connector.

EACH TRANSDUCER IS TESTED IN A WIND TUNNEL AND EQUIPPED WITH A CALIBRATION CERTIFICATE.

It runs on request, a periodic calibration and calibration product.



The Anemometer ANTC-V2.2 has been specifically designed for industrial applications such as:

- Cranes and Mobile Cranes
- Buildings and general structures
- Photovoltaic solar trackers
- Wind turbines
- Weather Stations
- Irrigation systems
- Automated greenhouses
- Cable cars for ski plants
- Cannons snow
- Telescopic cranes
- Platforms self-mounting
- Structures for playgrounds
- Ornamental fountains
- Pressostatic structures
- Highway tunnels and viaducts

Main Features

- Robust, reliable, suitable for heavy duty industrial use in extreme conditions
- Range of use 2-200km/h
- Stainless steel ball bearings
- Body in anodized aluminium
- Jack connector
- Stainless steel support



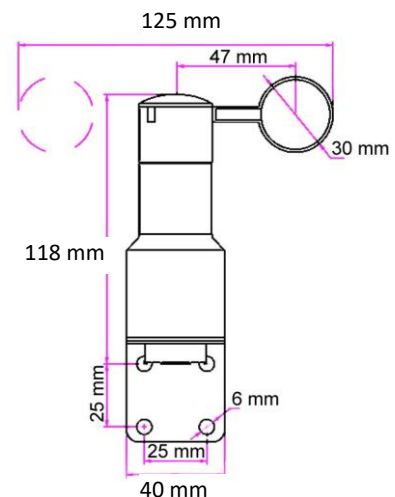
Mechanical Features

- IP55 degree protection (IP56 with M12 connector) (IP66 with armored bearings)
- Operating temperature -20° + 85°C
- Stock temperature -40° + 125°C
- Overall size on a side draw
- Weight 300 g connection cable excluded
- Measurement range from 2 to 200 km/h
- Medium error 0,06 %
- Standard deviation error 1,01 %
- Analysis done in a wind tunnel with a 0 to 200 m/s wind speed exceeding

Dimensions

- Body rotor: H 115 mm
- Body rotor + support: H 154 mm
- Diam. min. top body rotor: 29 mm
- Diam. max. bottom body rotor: 40 mm
- Diam. max. rotating head with cups assembled: 125 mm
- Stainless steel support assembled. Dimensions:
H 50 mm / W 40 mm

The anemometer consists of aluminium body and rotor with a removable hat for the mechanical seal of a Nylon Cups shockproof, UV ray, low temperature and hailstorm resistant. Rotating on a Ball Bearings, moves a cogwheel that through a photodiode gives 12 pulses per 1 rotation.



Electrical Features – Standard Connector 3 PIN Model

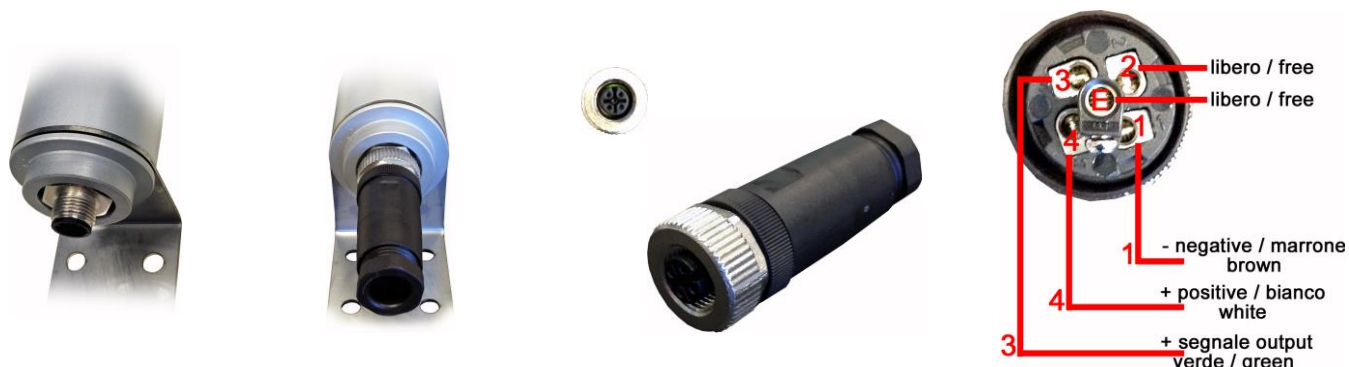
Items	ANTC_V2.2_Hz	ANTC_V2.2_Vdc	ANTC_V2.2_mA
Power supply	10 / 30 Vdc	10 / 30 Vdc	10 / 30 Vdc
Signal output that can be configurable by manufacturer	Frequency	Voltage. Output to be configurable by manufacturer: 0-5 / 1-5 / 0-10 / 2-10 Vdc	Current. Output to be configurable by manufacturer: 0-20 / 4-20 mA
Current / Consumption	50 mA	50 mA	50 mA
Measuring range of mechanical and electrical	2-200 Km/h	2-200 Km/h	2-200 Km/h
Configurable by manufacturer Fullscale	0-100 0-120 0-180 0-200	0-100 0-120 0-180 0-200
Impedance maximum load	Equal or less than 500 ohm
Current maximum load	10 mA	10 mA
Cable length pre wired	Every length can be requested	Every length can be requested	Every length can be requested



Connection jack
connector welding
side view:
1 = 0v
2 = +12/24 Vdc
3 = output signal

CAUTION: Use shielded cable 3x0,5 sq mm - the braided shield MUST NOT BE CONNECTED to the ground connector but completely isolated. It should be connected to ground only from the connection to the PLC electronics, display or electronic ANTC

Special Connector M12 5 PINS Model



Accessories

Nylon Cups

Reinforced by the hail, resistant from -40°C to +120°C, diam. 30mm, interchangeable. In the kit are included 3+1 stock cups



Connector
3 poles to be weld



Stainless-steel bracket

Already assembled. Dimensions: height 42mm, width 39mm.



Optional Items

Connecting cable

Transducer connection cable provided in the required lenght



Cable
Cable welding and pre-wiring