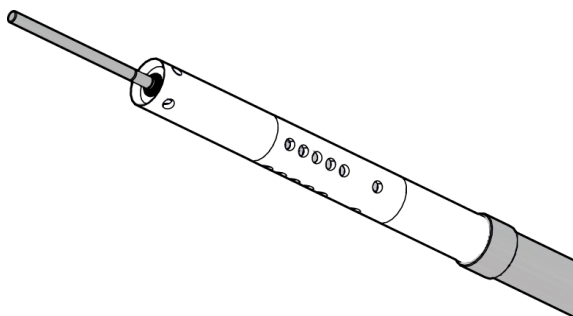


INSTALLATION INSTRUCTION

HMT330WPA Warmed Probe Accessory



- Installation kit for mounting of HMT330 and PTU300 warmed probes
- Designed to hold the a warmed probe and the additional temperature probe
- Can be connected to a cable conduit or supported by a threaded bar

OVERVIEW OF HMT330WPA

HMT330WPA is an installation kit for mounting the warmed probes of the HMT330 and PTU300 transmitters. The kit enables you to combine the warmed probe and the additional temperature probe into an easily manageable unit that can be supported by a cable conduit or a threaded bar. The HMT330WPA should be installed with the probes pointing down to prevent condensed water from collecting inside the unit; see Figure 1 below.

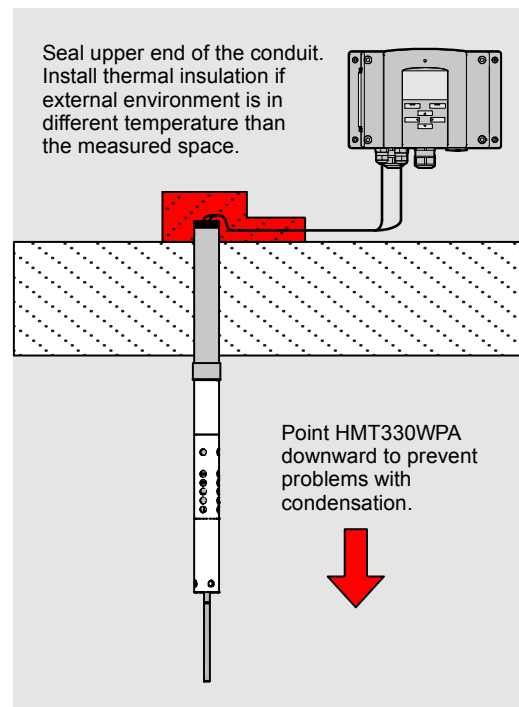


Figure 1 HMT330WPA Recommended Installation

The parts of the HMT330WPA are shown in Figure 2. The screw sleeve (7) has a PG 16 thread for connecting to a cable conduit. The flange (9) and the short M3 threaded bars that connect it to the screw sleeve (8) are only needed when supporting the HMT330WPA with a threaded bar.

NOTE Before starting, consider how you will support the finished assembly. If you want to use a cable conduit, you must insert the probes through the conduit before assembling them into the HMT330WPA.

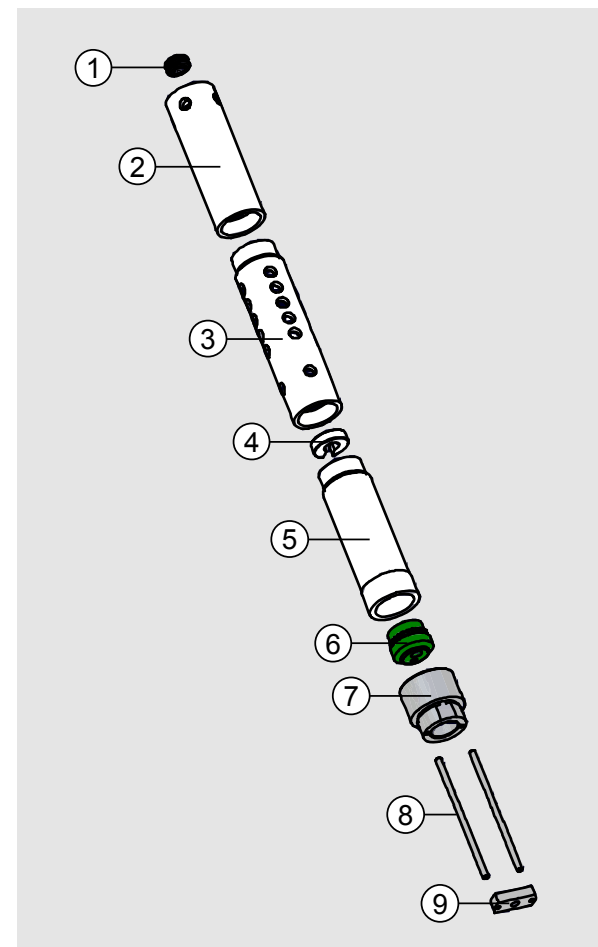


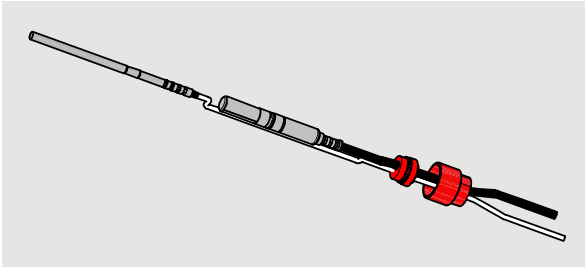
Figure 2 HMT330WPA Parts

- 1 = Grommet
- 2 = Measuring tube (T)
- 3 = Measuring tube (RH)
- 4 = Support
- 5 = Tube
- 6 = Sealing rubber with two-hole cut
- 7 = Screw sleeve adapter with PG 16 thread for attaching a cable conduit
- 8 = M3 threaded bar for connecting the flange (2 pieces)
- 9 = Flange with M8 thread for threaded bar

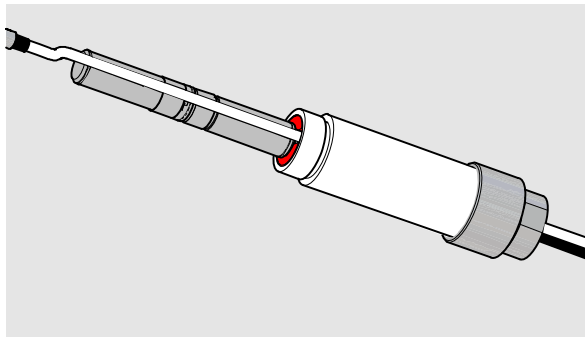
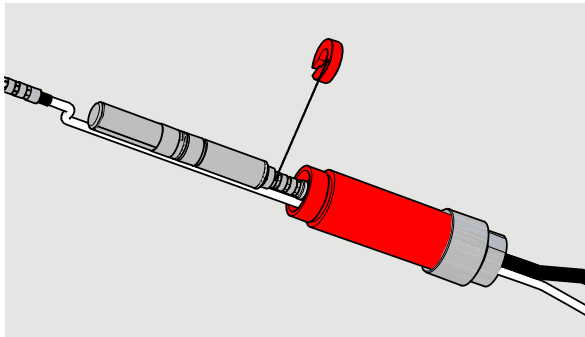


ASSEMBLING THE HMT330WPA

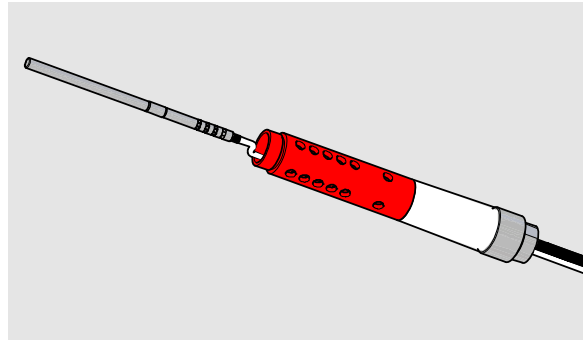
1. Bring the probes together as shown below. Insert the screw sleeve (7) over the probes and connect them together with the sealing rubber (6).



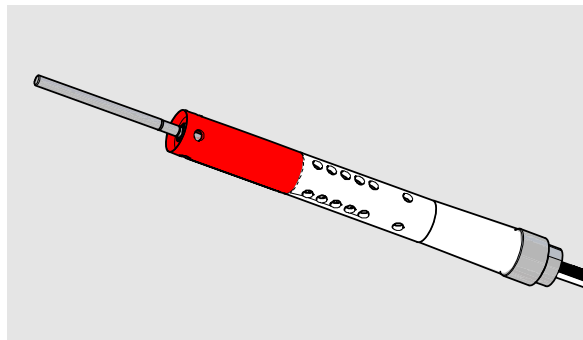
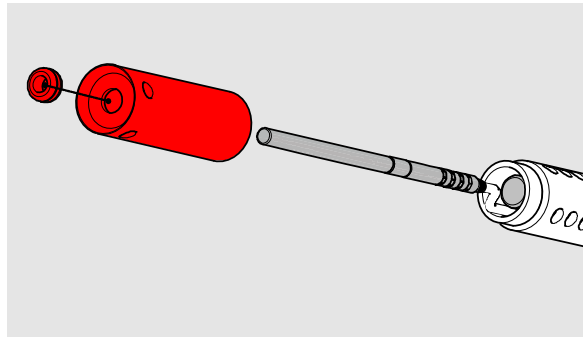
2. Insert the first tube (5) over the probes and tighten it to the screw sleeve (7). Insert the small white plastic support (4) to the cable at the base of the RH measurement probe. Route the cable of the T probe so it rests in the cutout of the support. Push the screw sleeve so that the support goes inside the tube.



3. Tighten the RH measuring (3) tube over the warmed probe. This is the tube with most holes on the sides.

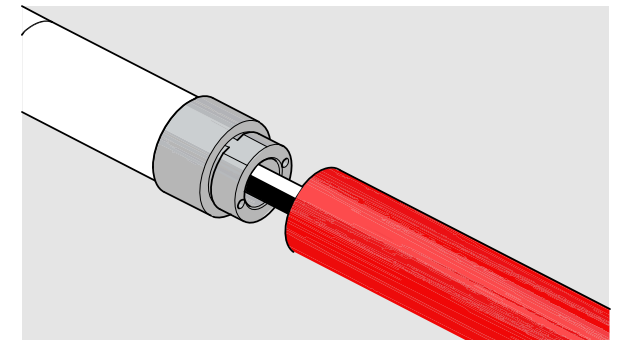


4. Insert the grommet (1) to the hole at the end of the T measuring tube (2). Then push the temperature probe through the grommet and tighten the tube.



MECHANICAL SUPPORT: CABLE CONDUIT

Connect the conduit to the PG 16 thread on the screw sleeve (7).



MECHANICAL SUPPORT: M8 THREADED BAR

To use a threaded bar as a support, first attach the flange (9) to the screw sleeve (7) using the two M3 threaded bars (8). Use threadlocking fluid to secure the bars. Then connect your M8 threaded bar to the flange.

